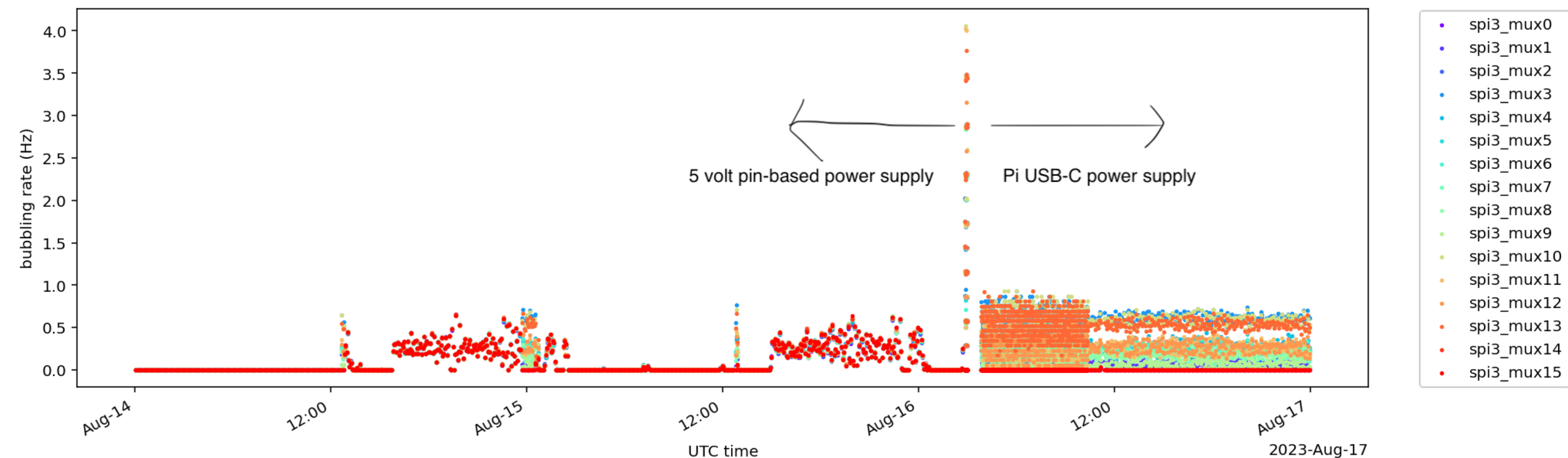
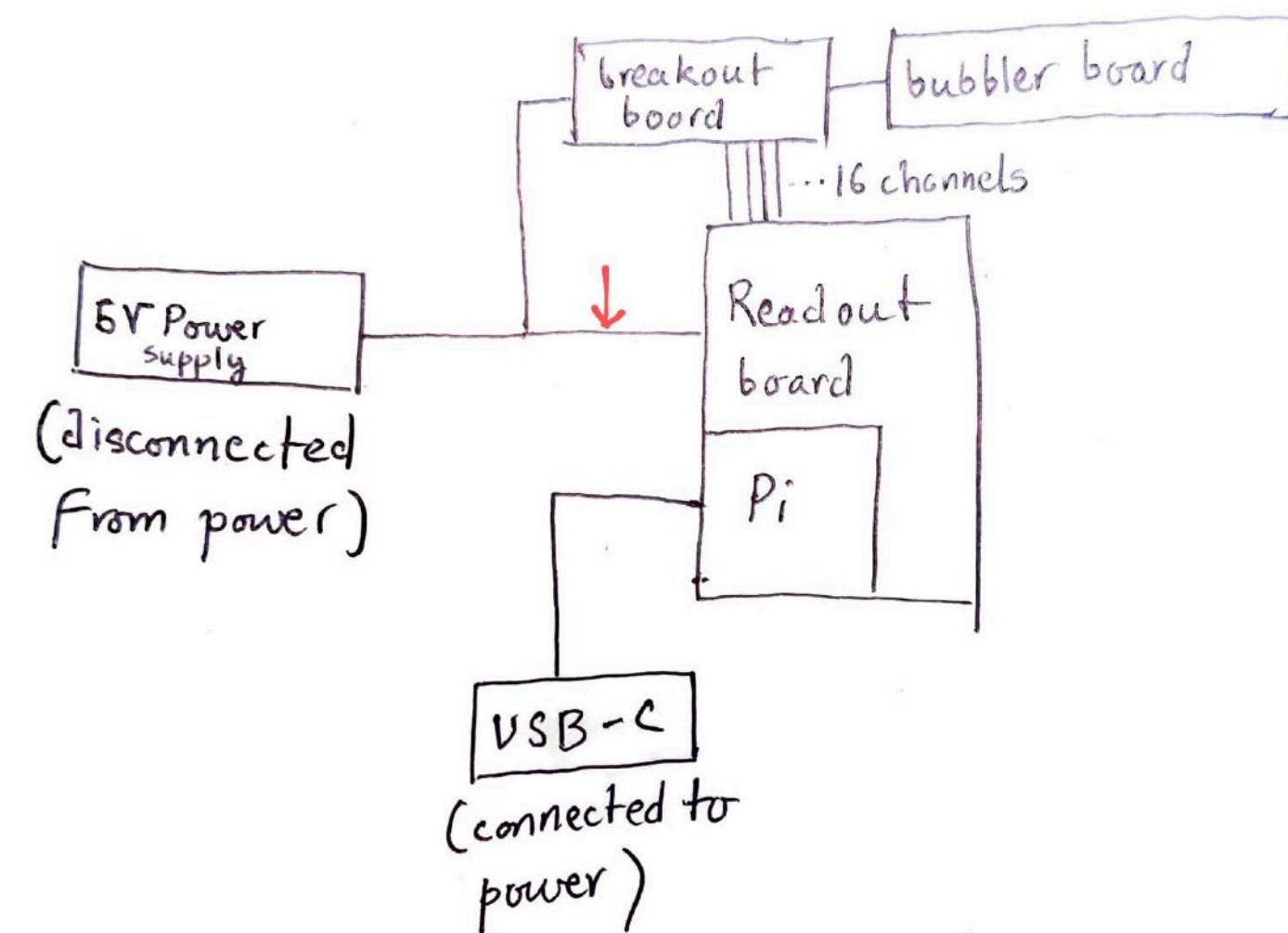


KLM Meeting

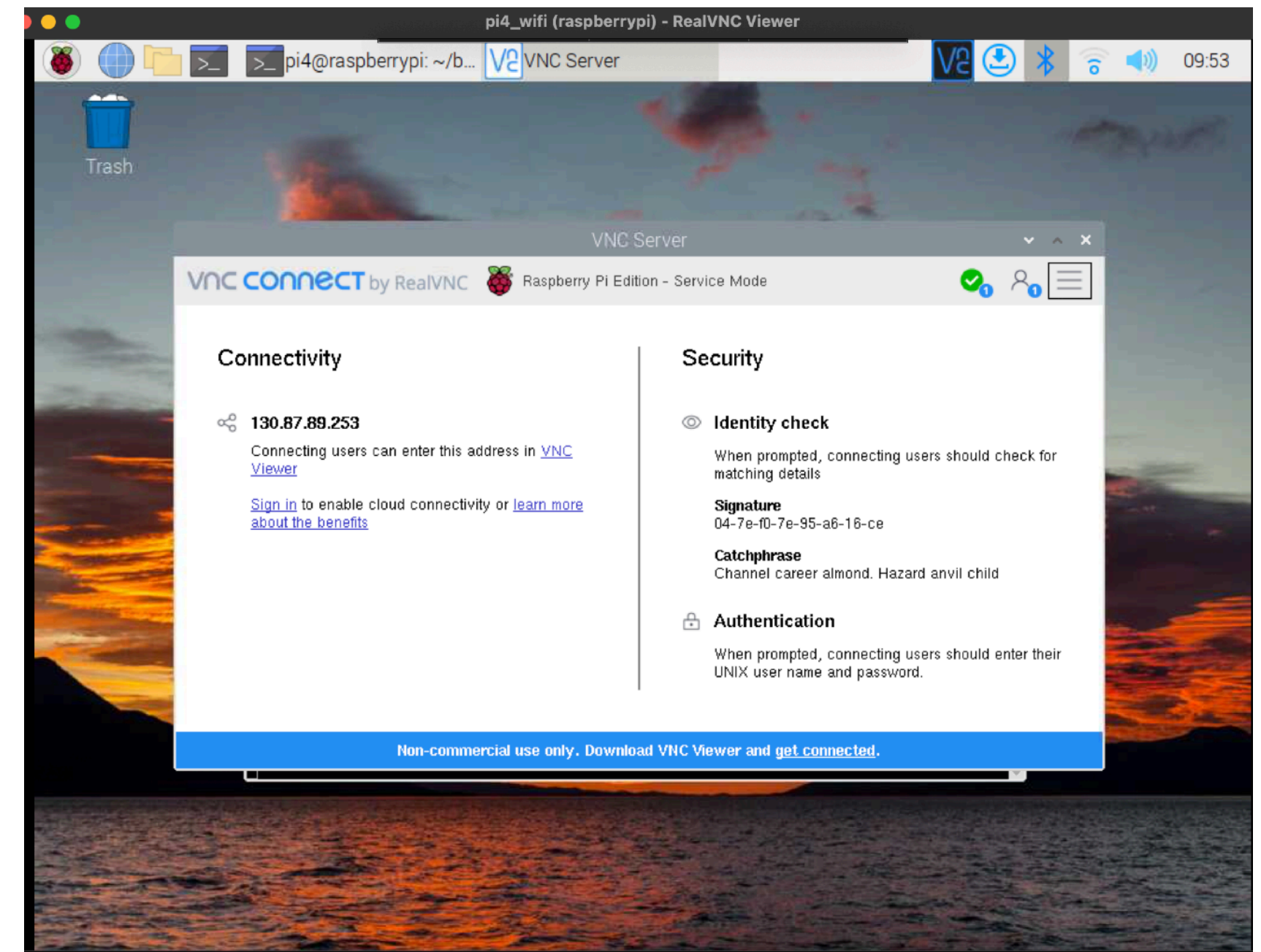
KEK updates

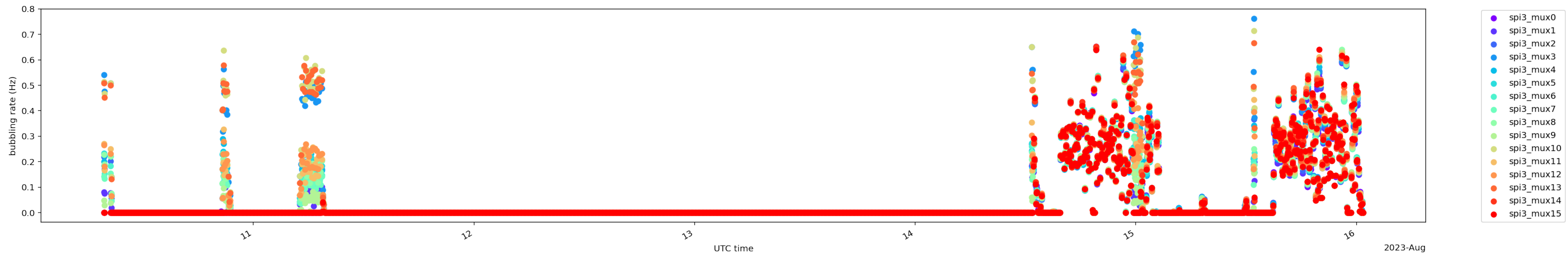
Michele, Noah, Sayan, 23th August, 2023

- Powered by USB-C port on Pi
 - 5V power supply disconnected from power
 - 5V power supply connected to the circuit
- Auto-updating flow rate plot
 - Setup using crontab, image viewer(feh)
- Connected to board v2 through ISU VPN



- The prototype-I board 4 has been connected BKLM B3 outer RPC supply bubbler panel.
- It is resting in the rack mount on a stand beside the panel.
- Pi4 is accessible on the wifi network at KEK
- It is also accessible on the internet through kek vpn
 - Connection through ssh and vnc is possible





- Activity seen everytime pi is rebooted

- Low voltage warning is issued after the boot
 - Happens every ~15min
 - Was not seen at ISU

```
~ — pi4@raspberrypi: ~ — ssh pi4_wifi
[Tue Aug 15 21:43:52 2023] hwmon hwmon1: Undervoltage detected!
[Tue Aug 15 21:43:56 2023] hwmon hwmon1: Voltage normalised
[Tue Aug 15 21:44:10 2023] hwmon hwmon1: Undervoltage detected!
[Tue Aug 15 21:44:14 2023] hwmon hwmon1: Voltage normalised
[Tue Aug 15 21:44:44 2023] hwmon hwmon1: Undervoltage detected!
[Tue Aug 15 21:44:48 2023] hwmon hwmon1: Voltage normalised
[Tue Aug 15 21:51:57 2023] hwmon hwmon1: Undervoltage detected!
[Tue Aug 15 21:52:22 2023] hwmon hwmon1: Voltage normalised
[Tue Aug 15 21:54:33 2023] hwmon hwmon1: Undervoltage detected!
[Tue Aug 15 21:54:37 2023] hwmon hwmon1: Voltage normalised
[Tue Aug 15 23:19:17 2023] hwmon hwmon1: Undervoltage detected!
[Tue Aug 15 23:19:33 2023] hwmon hwmon1: Voltage normalised
[Tue Aug 15 23:20:40 2023] hwmon hwmon1: Undervoltage detected!
[Tue Aug 15 23:20:44 2023] hwmon hwmon1: Voltage normalised
[Tue Aug 15 23:22:23 2023] hwmon hwmon1: Undervoltage detected!
[Tue Aug 15 23:22:29 2023] hwmon hwmon1: Voltage normalised
[Wed Aug 16 00:10:50 2023] hwmon hwmon1: Undervoltage detected!
[Wed Aug 16 00:10:54 2023] hwmon hwmon1: Voltage normalised
[Wed Aug 16 01:22:32 2023] hwmon hwmon1: Undervoltage detected!
[Wed Aug 16 01:22:36 2023] hwmon hwmon1: Voltage normalised
[Wed Aug 16 01:50:43 2023] hwmon hwmon1: Undervoltage detected!
[Wed Aug 16 01:50:47 2023] hwmon hwmon1: Voltage normalised
[Wed Aug 16 02:35:25 2023] hwmon hwmon1: Undervoltage detected!
[Wed Aug 16 02:35:29 2023] hwmon hwmon1: Voltage normalised
[Wed Aug 16 03:40:01 2023] hwmon hwmon1: Undervoltage detected!
[Wed Aug 16 03:40:08 2023] hwmon hwmon1: Voltage normalised
[Wed Aug 16 04:57:51 2023] hwmon hwmon1: Undervoltage detected!
[Wed Aug 16 04:57:55 2023] hwmon hwmon1: Voltage normalised
[Wed Aug 16 05:12:11 2023] hwmon hwmon1: Undervoltage detected!
[Wed Aug 16 05:12:15 2023] hwmon hwmon1: Voltage normalised
[Wed Aug 16 06:02:54 2023] hwmon hwmon1: Undervoltage detected!
[Wed Aug 16 06:02:58 2023] hwmon hwmon1: Voltage normalised
[Wed Aug 16 06:39:19 2023] hwmon hwmon1: Undervoltage detected!
[Wed Aug 16 06:39:25 2023] hwmon hwmon1: Voltage normalised
[Wed Aug 16 06:54:40 2023] hwmon hwmon1: Undervoltage detected!
[Wed Aug 16 06:54:44 2023] hwmon hwmon1: Voltage normalised
[Wed Aug 16 07:22:26 2023] hwmon hwmon1: Undervoltage detected!
[Wed Aug 16 07:22:32 2023] hwmon hwmon1: Voltage normalised
[Wed Aug 16 07:53:32 2023] hwmon hwmon1: Undervoltage detected!
[Wed Aug 16 07:53:36 2023] hwmon hwmon1: Voltage normalised
[Wed Aug 16 07:55:53 2023] hwmon hwmon1: Undervoltage detected!
[Wed Aug 16 07:56:10 2023] hwmon hwmon1: Voltage normalised
[Wed Aug 16 08:15:43 2023] hwmon hwmon1: Undervoltage detected!
[Wed Aug 16 08:15:53 2023] hwmon hwmon1: Voltage normalised
[Wed Aug 16 08:16:25 2023] hwmon hwmon1: Undervoltage detected!
[Wed Aug 16 08:16:29 2023] hwmon hwmon1: Voltage normalised
[Wed Aug 16 08:16:31 2023] hwmon hwmon1: Undervoltage detected!
[Wed Aug 16 08:16:35 2023] hwmon hwmon1: Voltage normalised
[Wed Aug 16 09:11:05 2023] hwmon hwmon1: Undervoltage detected!
[Wed Aug 16 09:11:09 2023] hwmon hwmon1: Voltage normalised
[Wed Aug 16 09:43:21 2023] hwmon hwmon1: Undervoltage detected!
[Wed Aug 16 09:43:25 2023] hwmon hwmon1: Voltage normalised
[Wed Aug 16 09:43:35 2023] hwmon hwmon1: Undervoltage detected!
[Wed Aug 16 09:43:41 2023] hwmon hwmon1: Voltage normalised
[Wed Aug 16 09:44:15 2023] hwmon hwmon1: Undervoltage detected!
[Wed Aug 16 09:44:19 2023] hwmon hwmon1: Voltage normalised
pi4@raspberrypi:~ $
```

- Need longer ribbon cable to connect to panel with more activity
- Found 2x25 male/female on Amazon.jp
- 2x25 pin male/male would be a better choice
- This won't be an issue in the prototype II board.



CablesOnline 23-inch内部IDC 50-pin SCSIドライブ拡張子ケーブル、リボンケーブル(fs-008)

Brand: CablesOnline
5.0 ★★★★★ 1 rating

¥4,257 Tax included



Ships from the seller



Worry free shopping



Secure transaction

Brand	CablesOnline
Connector Type	SCSI
Unit Count	1.0 個
Item Weight	6 Ounces
Gauge	28.0

About this item

- IDCリボンケーブル延長50 - Pin SCSI
- コネクタ: 1 x IDC - Pinオス, 1 x IDC - Pinメス

¥4,257 Tax included

FREE delivery **August 28 - September 2.** [Details](#)

📍 Deliver to Sayan - 300-3256

Usually ships within 4 to 5 days Click [here](#) for details of availability.

Quantity: 1 ▾

Add to Cart

Buy Now

Payment	Secure transaction
Ships from	ディーカム
Sold by	ディーカム
	★★★★★ (318 ratings)

Add to List



Have one to sell?

Sell on Amazon