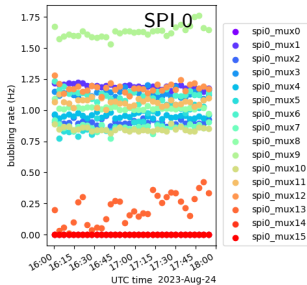
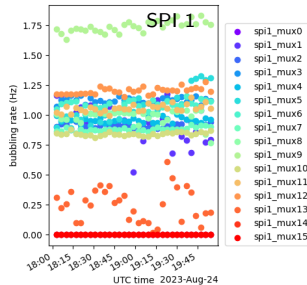


- Tested boards: board 2, board 4, board 5, board 1, and board 3
- For boards 2, 4, and 5: For each SPIs the data is taken for 2hrs and each data point is integrated over 60 sec
- For boards 1 and 3: For each SPIs the data is taken for 1 – 1.5 hrs and each data point is integrated over 5 sec
- All tested boards are working fine

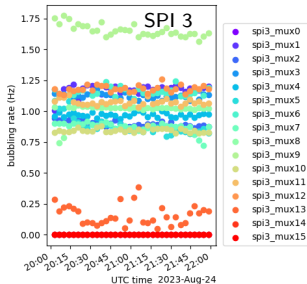
Board 2: Flow rate monitoring



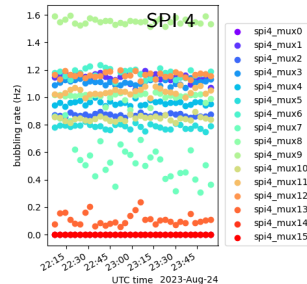
last updated on Thu Aug 24 12:55:24 2023 local



last updated on Thu Aug 24 14:56:33 2023 local

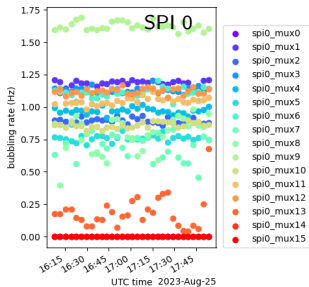


last updated on Thu Aug 24 17:03:04 2023 local

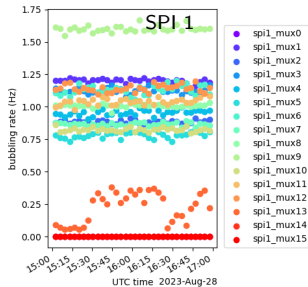


last updated on Thu Aug 24 18:55:52 2023 local

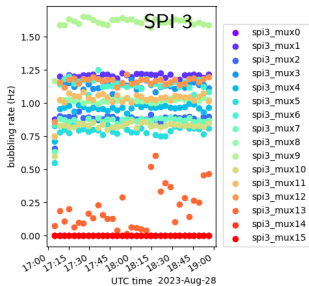
Board 4: Flow rate monitoring



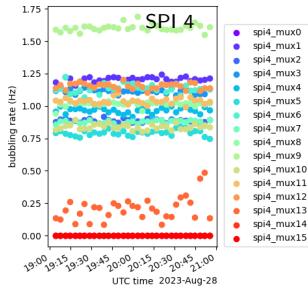
last updated on Fri Aug 25 12:56:41 2023 local



last updated on Mon Aug 28 11:58:53 2023 local

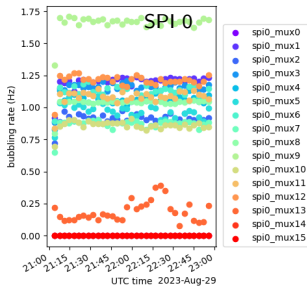


last updated on Mon Aug 28 13:58:05 2023 local

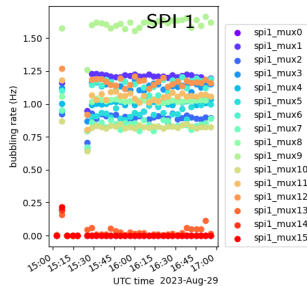


last updated on Mon Aug 28 15:57:40 2023 local

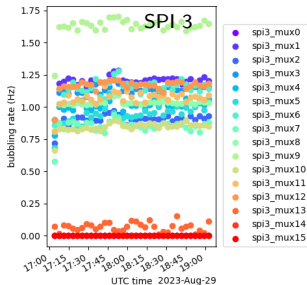
Board 5: Flow rate monitoring



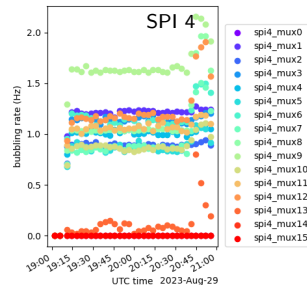
last updated on Tue Aug 29 17:59:07 2023 local



last updated on Tue Aug 29 11:58:49 2023 local

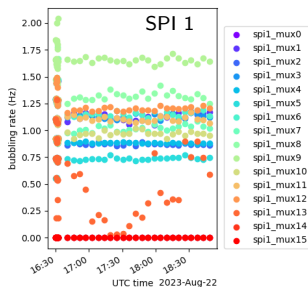
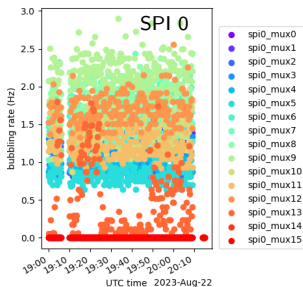


last updated on Tue Aug 29 14:05:26 2023 local



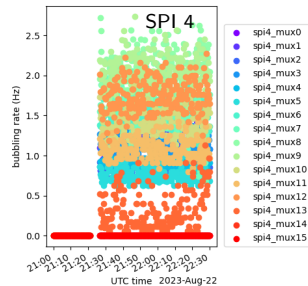
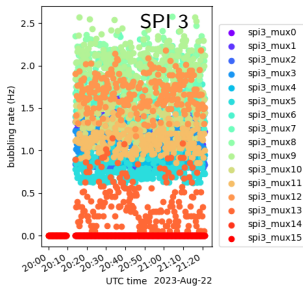
last updated on Tue Aug 29 15:57:48 2023 local

Board 1: Flow rate monitoring

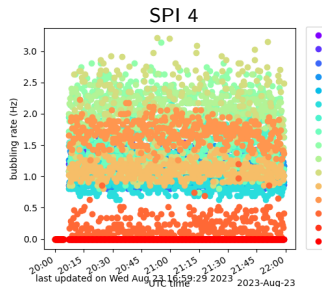
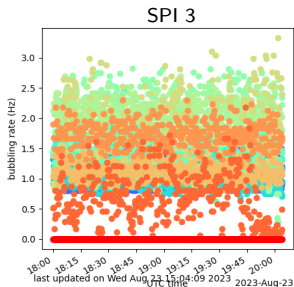
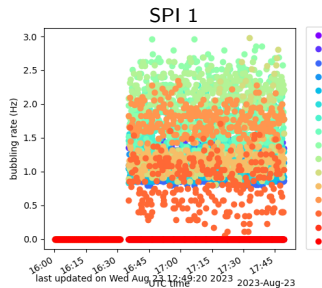
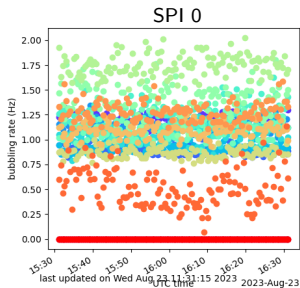


last updated on Tue Aug 22 15:15:07 2023 local

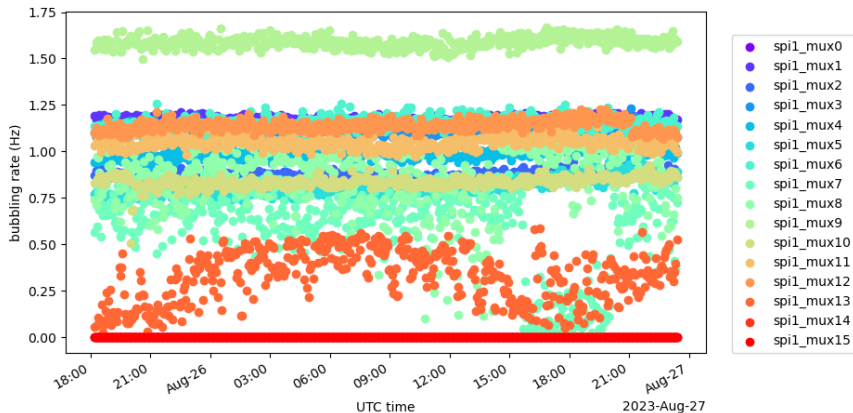
last updated on Tue Aug 22 13:57:23 2023 local



Board 3: Flow rate monitoring



Flow rate monitoring



last updated on Sat Aug 26 18:24:32 2023 local