

Gated Mode at KEK

Gated Mode at KEK.

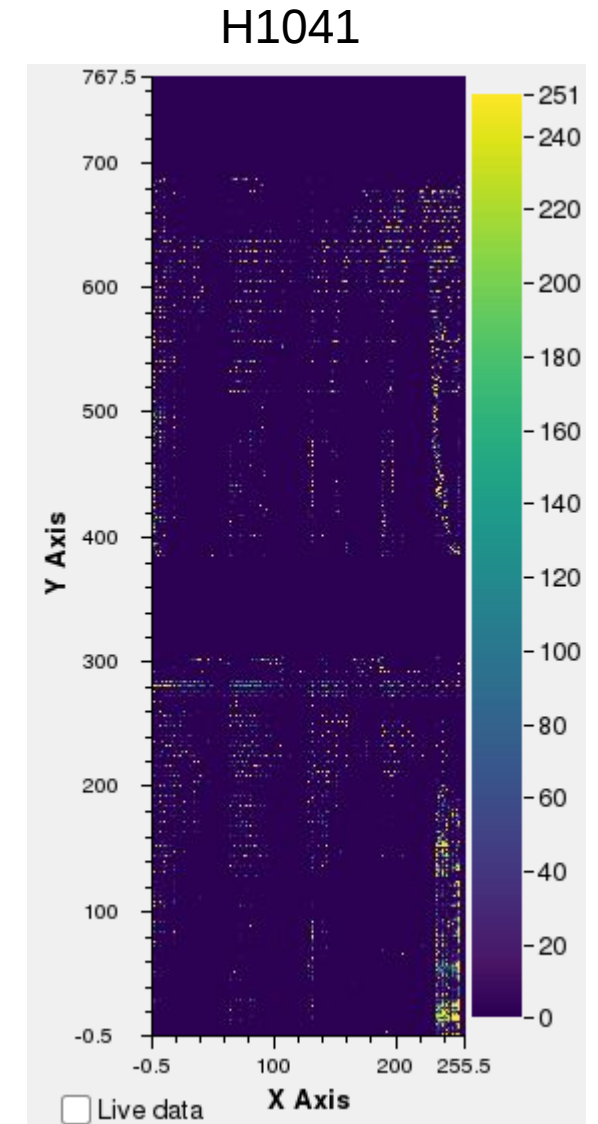
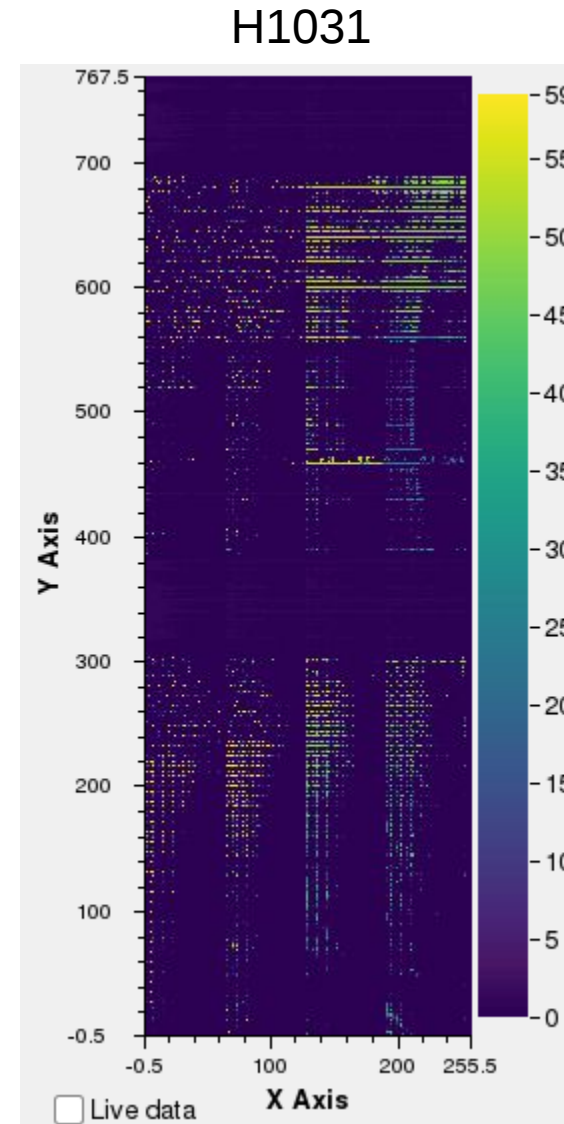
- We wanted to see if the system behaves similar to the DESY system
→ Perform optimization at DESY
- Check current consumption with higher clear on/off currents of irradiated modules
- DHH firmware not in the final state since we decided to get the parameters from epics (not from FTSW)
- But we could redo all the tests from the DESY setup
- Internal triggers
- H1031 and H1041 only (since they are close by, have different DHCs and relative low currents)
- On rather short notice we successfully run GM

Currents.

- Normally:
 - Clear off: -21 mA \rightarrow -39 mA \rightarrow -55 mA
 - Clear on: 27 mA \rightarrow 48 mA \rightarrow 67 mA
- H1031:
 - Clear off: -21 mA \rightarrow -50 mA \rightarrow -68 mA
 - Clear on: 42 mA \rightarrow 72 mA \rightarrow 90 mA
- H1041:
 - Clear off: -25 mA \rightarrow -43 mA \rightarrow -69 mA
 - Clear on: 48 mA \rightarrow 69 mA \rightarrow 94 mA
- Increase of currents is slightly higher than for not radiated modules

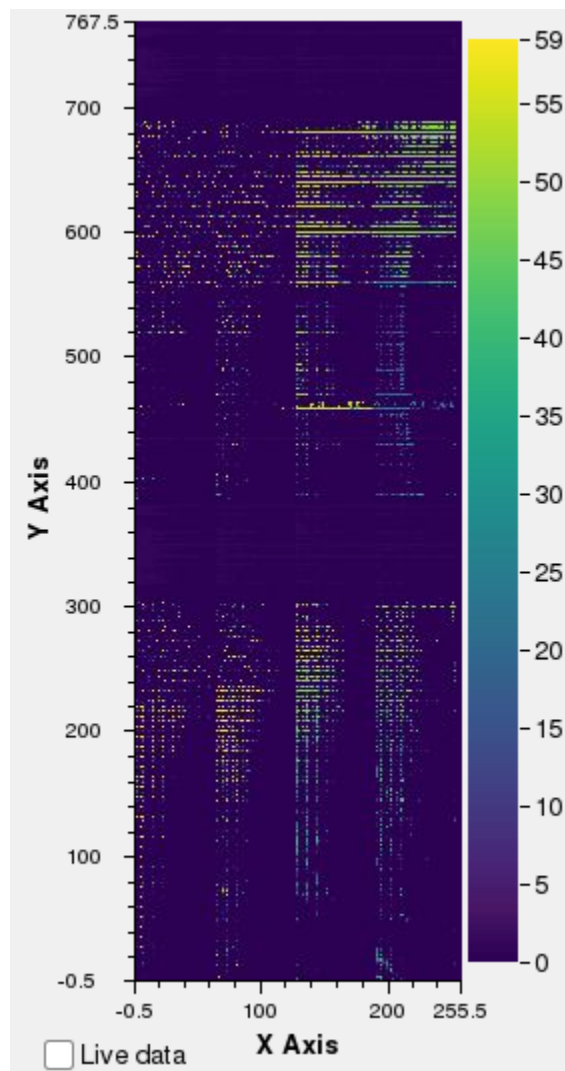
Occupancies.

- GM length: 10 gates
- No trigger: 20 gates
- Pedestal oscillations on the hole module
 - Higher thresholds
 - Improve voltage settings (optimization at DESY?)
- Data is stored under
/data/commissioning/runs/2019_06_13_002/
data.dat
- Further analysis

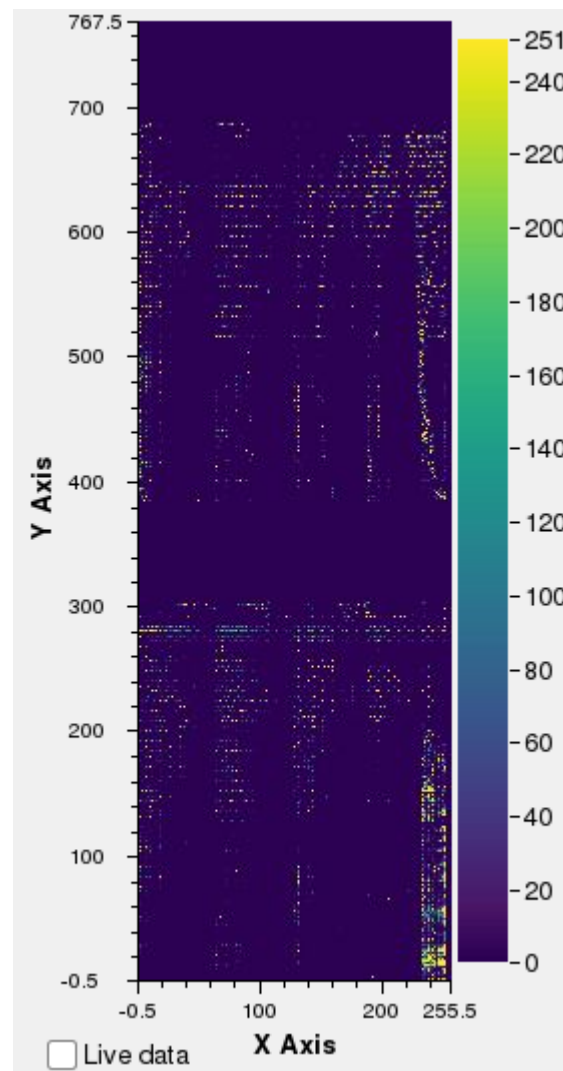


Occupancies.

H1031



H1041



DESY measurement (Varghese)

