

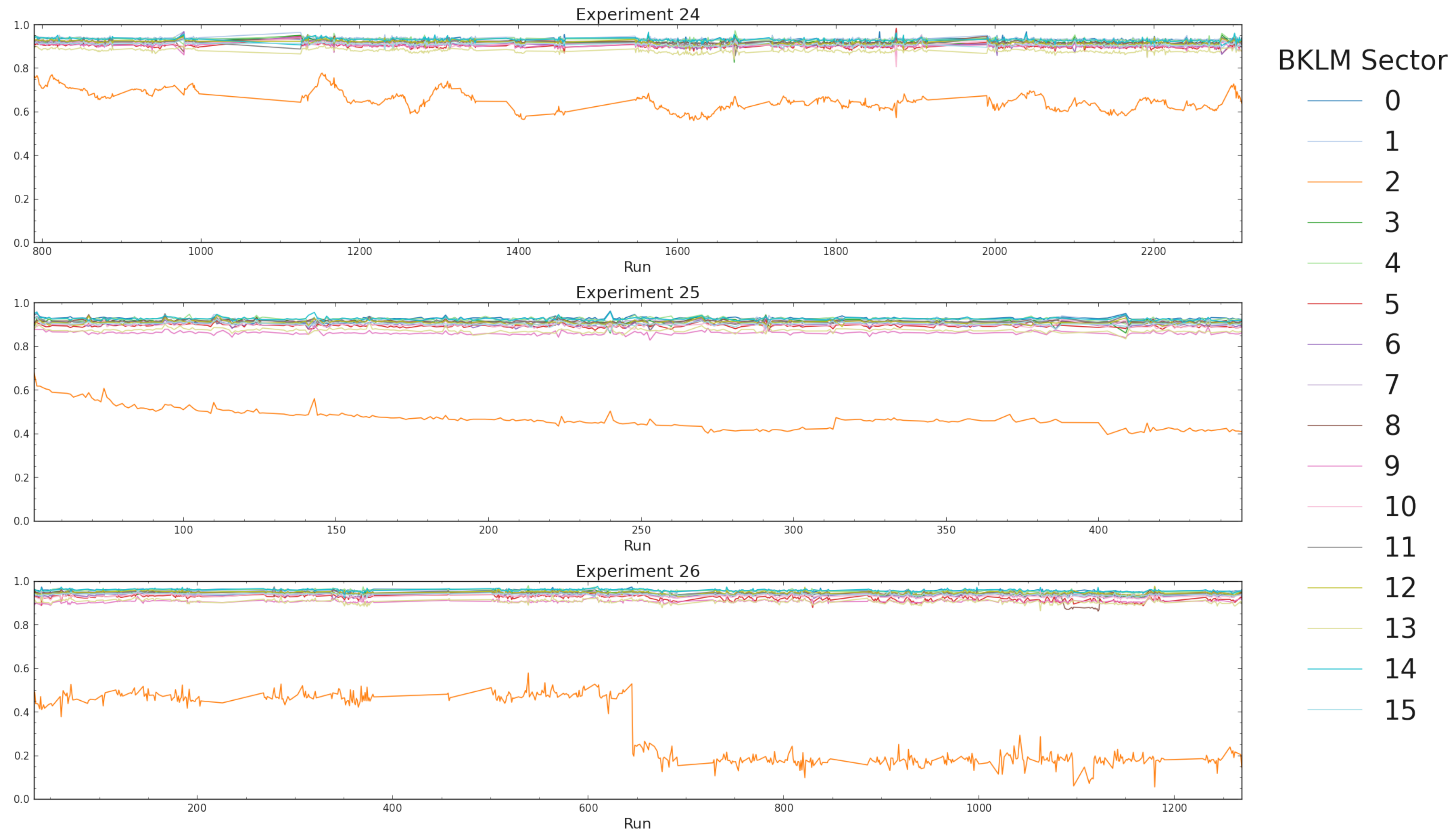
KLM Efficiencies vs. Run

Michele Veronesi
ISU KLM meeting
10/06/2022

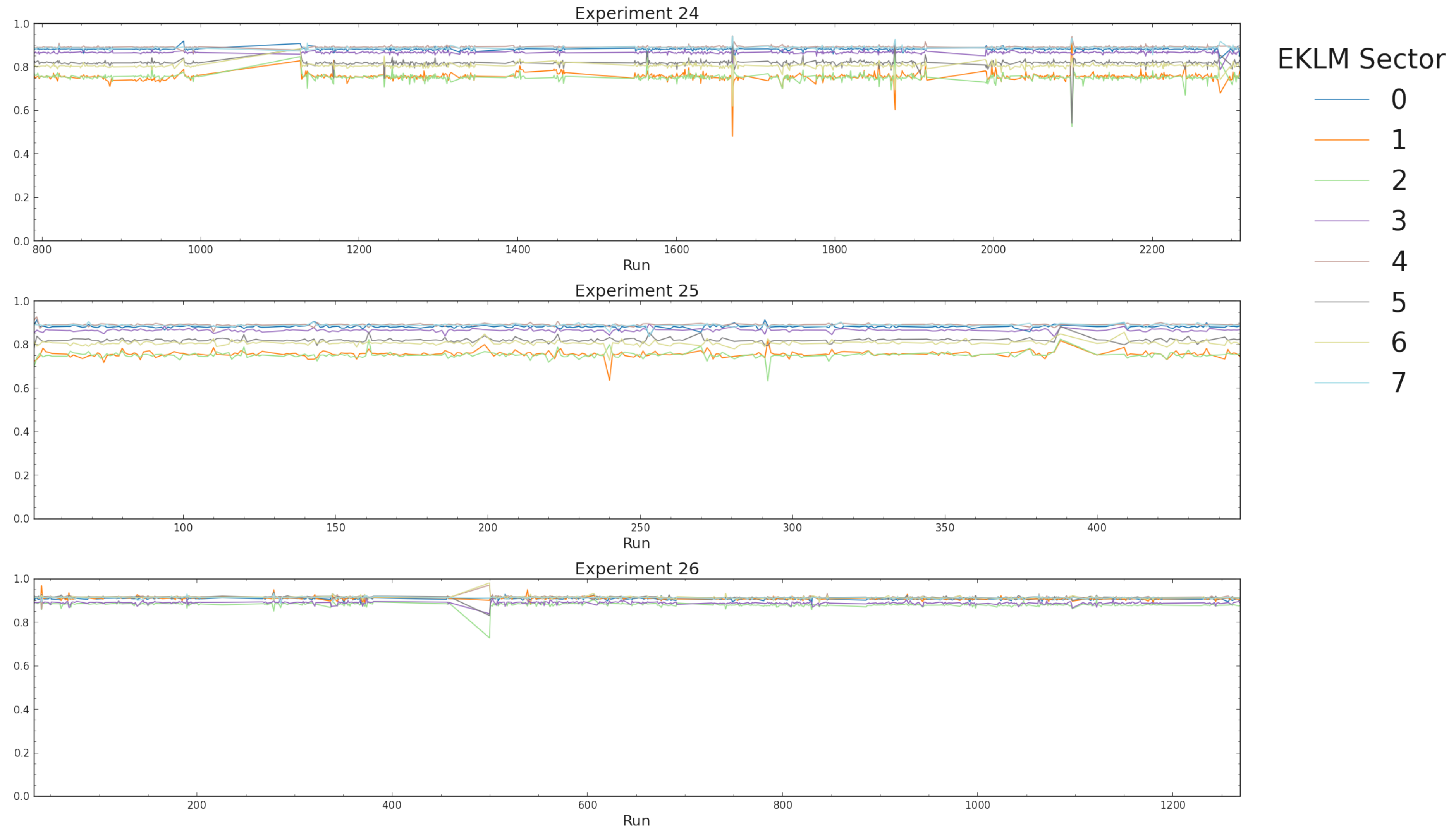
Outline

- Gathered the DQM histograms for different experiments and run periods at `/group/belle2/phase3/dqm/dqmsrv1/`
- The aim is to look at the evolution the quantities used in the KLM monitoring over time (e.g. hit times, occupancies, #digits, efficiencies)
- Started with the BKLM/EKLM *sector* and *layer* efficiencies introduced in experiment 24
- Other quantities need more refinement in order to be displayed in 2D plots vs. run period (WIP)

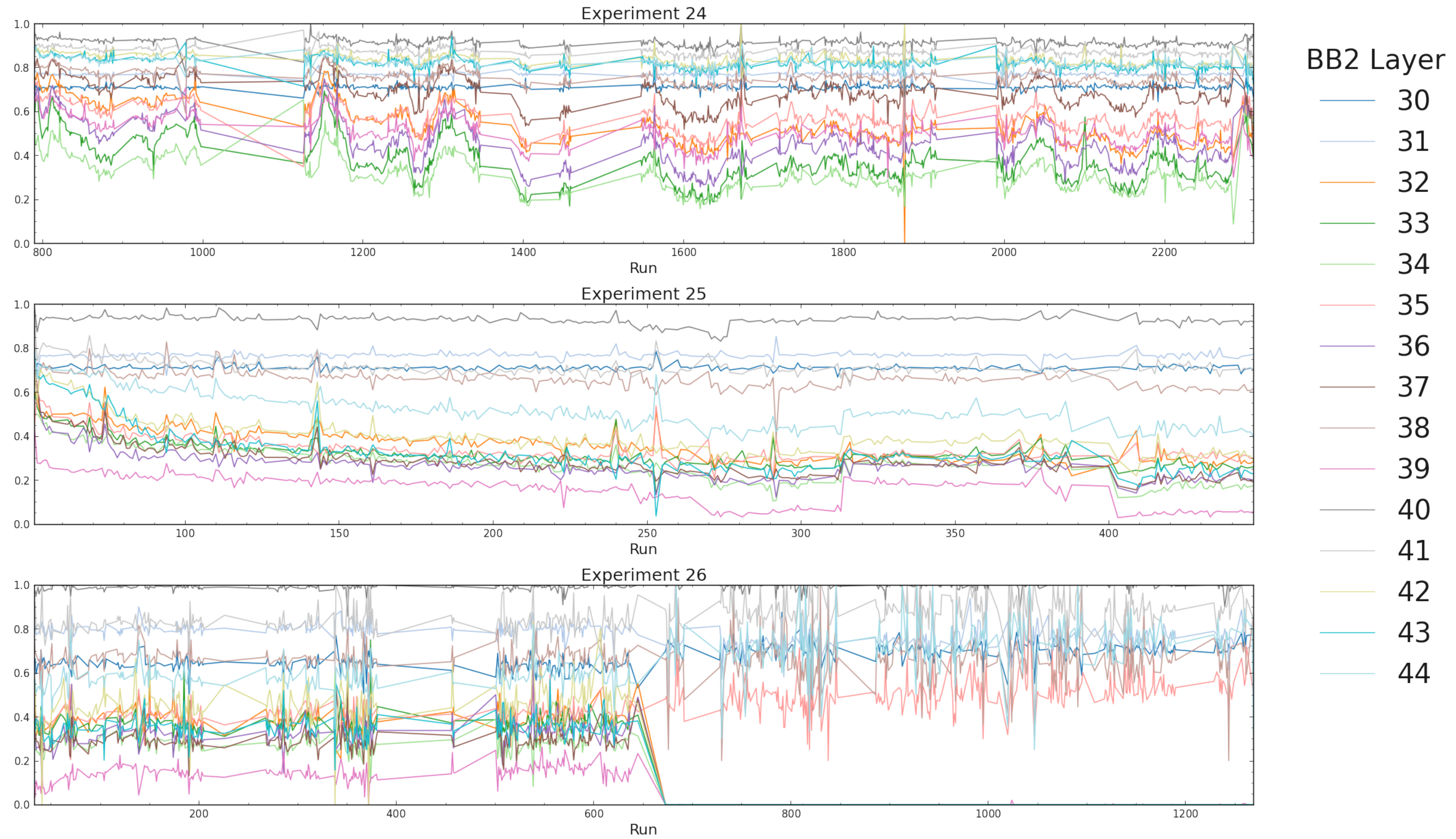
BKLM Sector Efficiencies



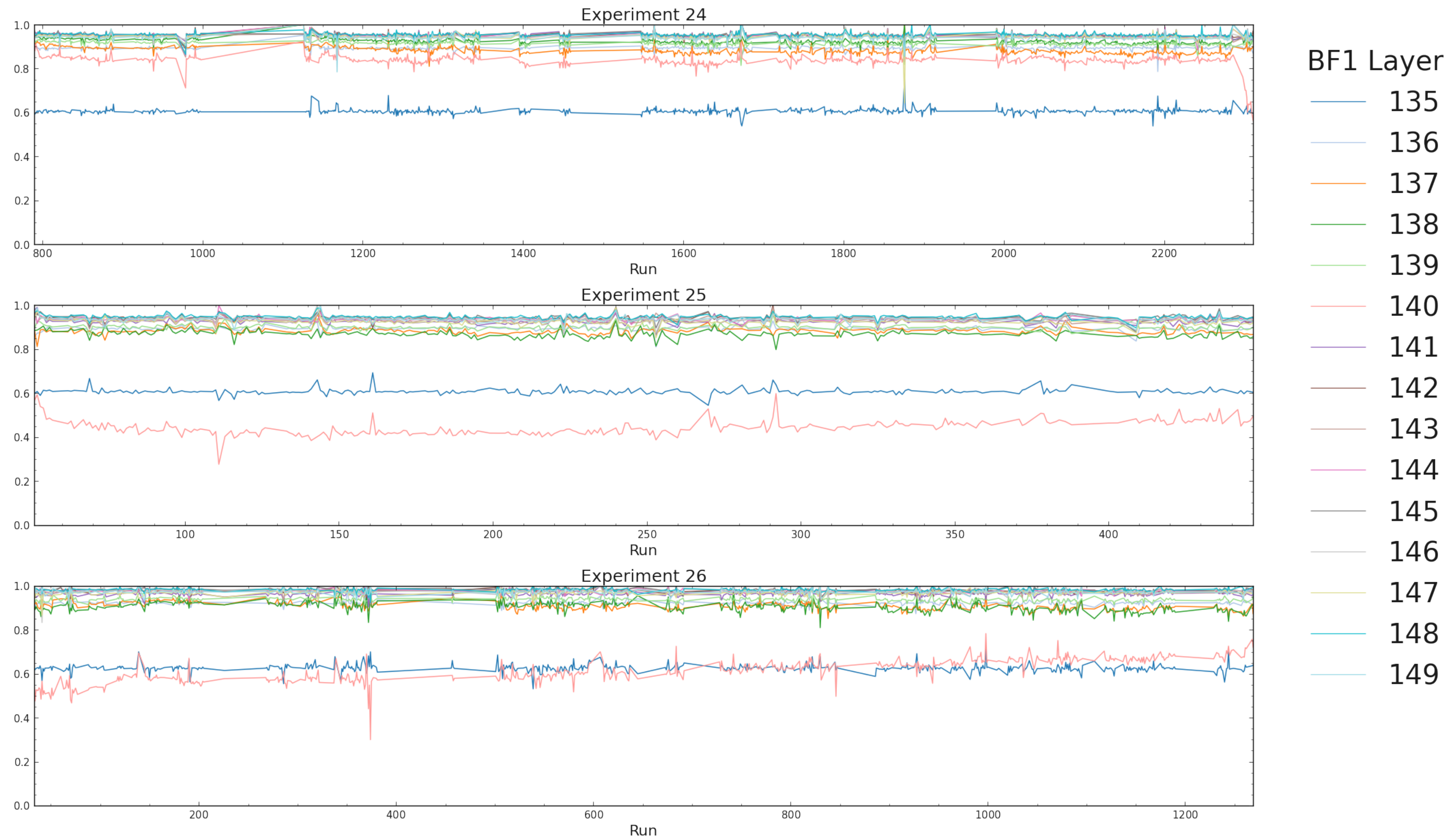
EKLM Sector Efficiencies



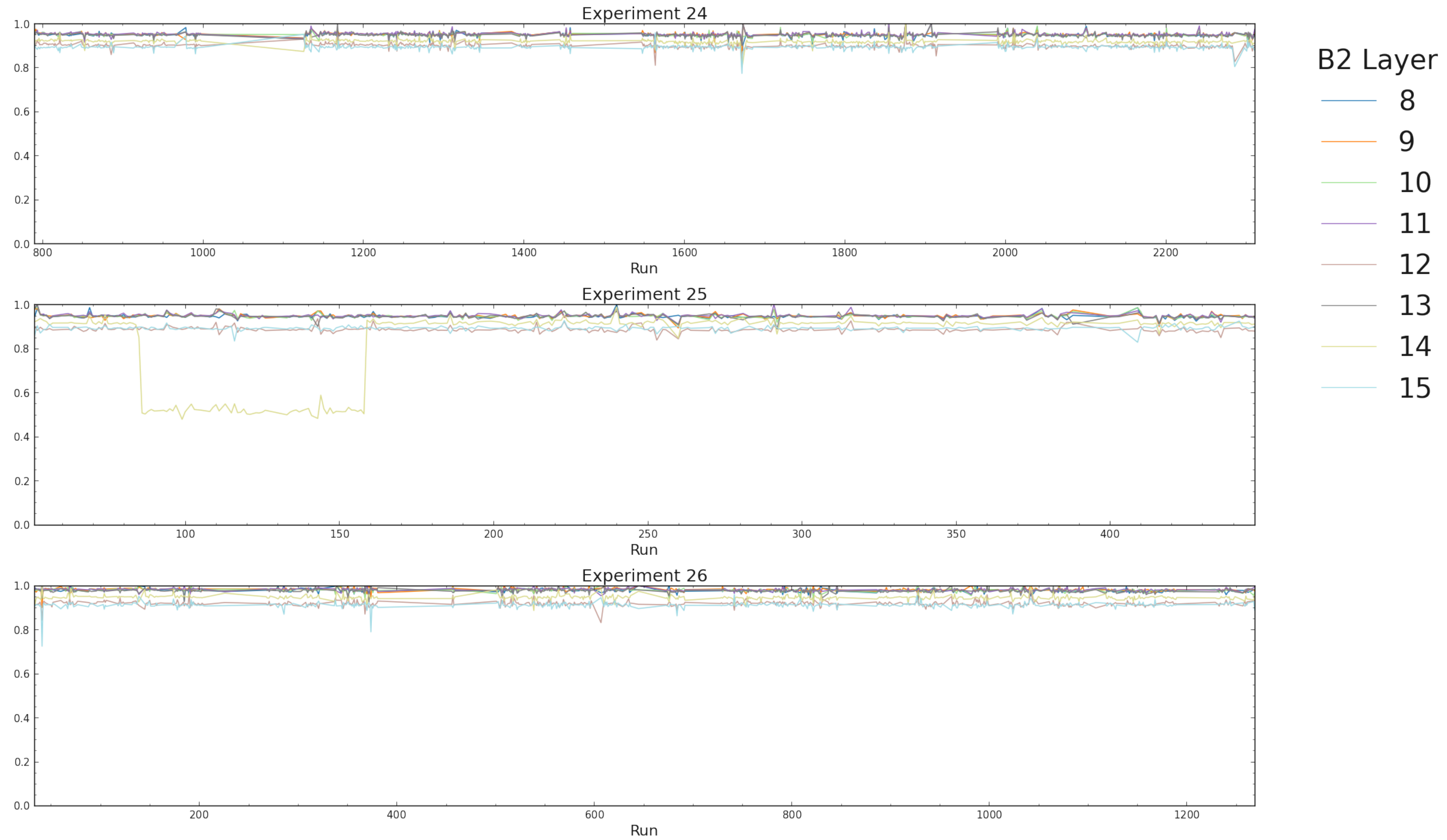
BKLM Plane Efficiencies (BB2)



BKLM Plane Efficiencies (BF1)



EKLM Plane Efficiencies (B2)



EKLM Plane Efficiencies (F3)

