

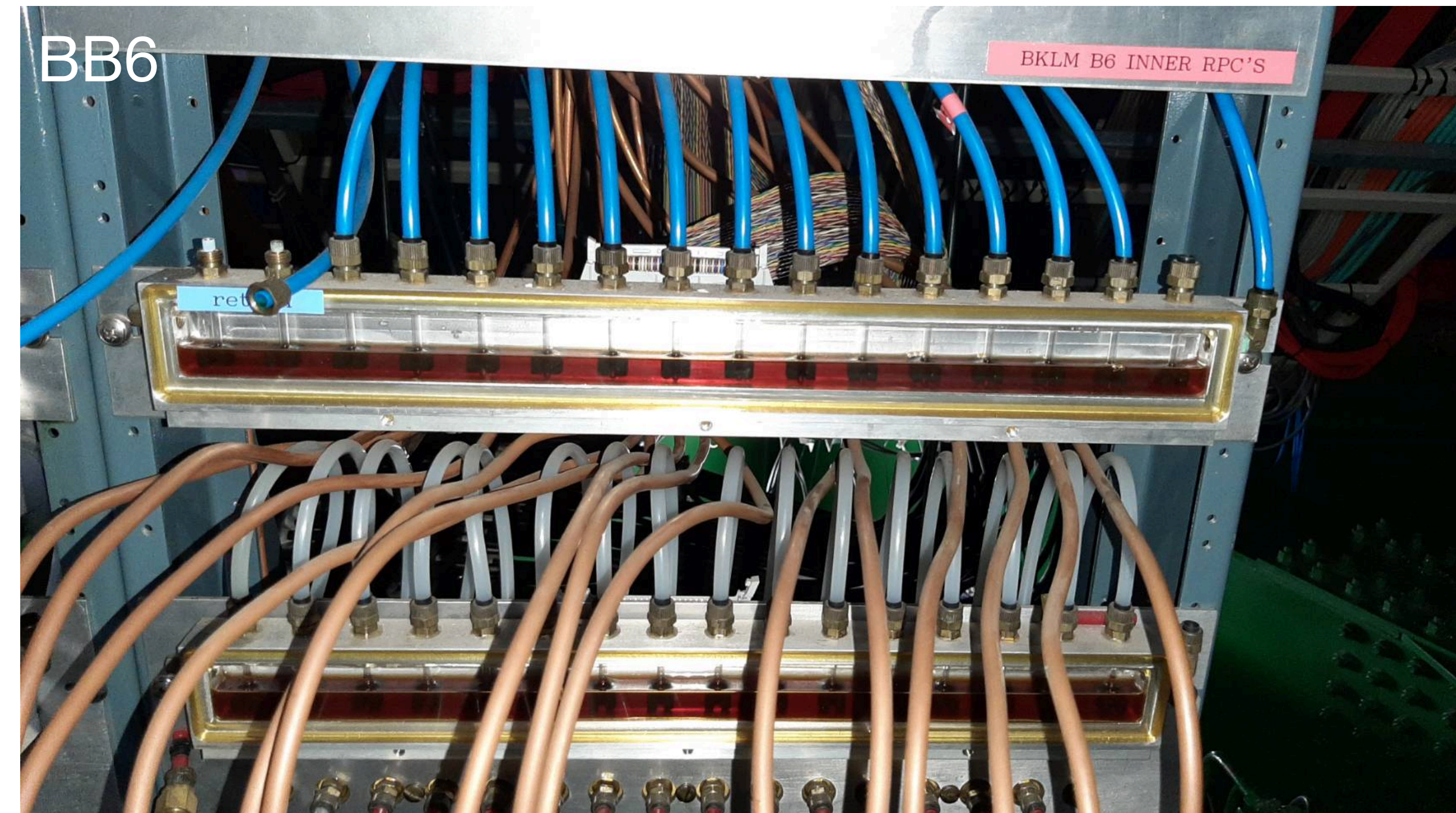
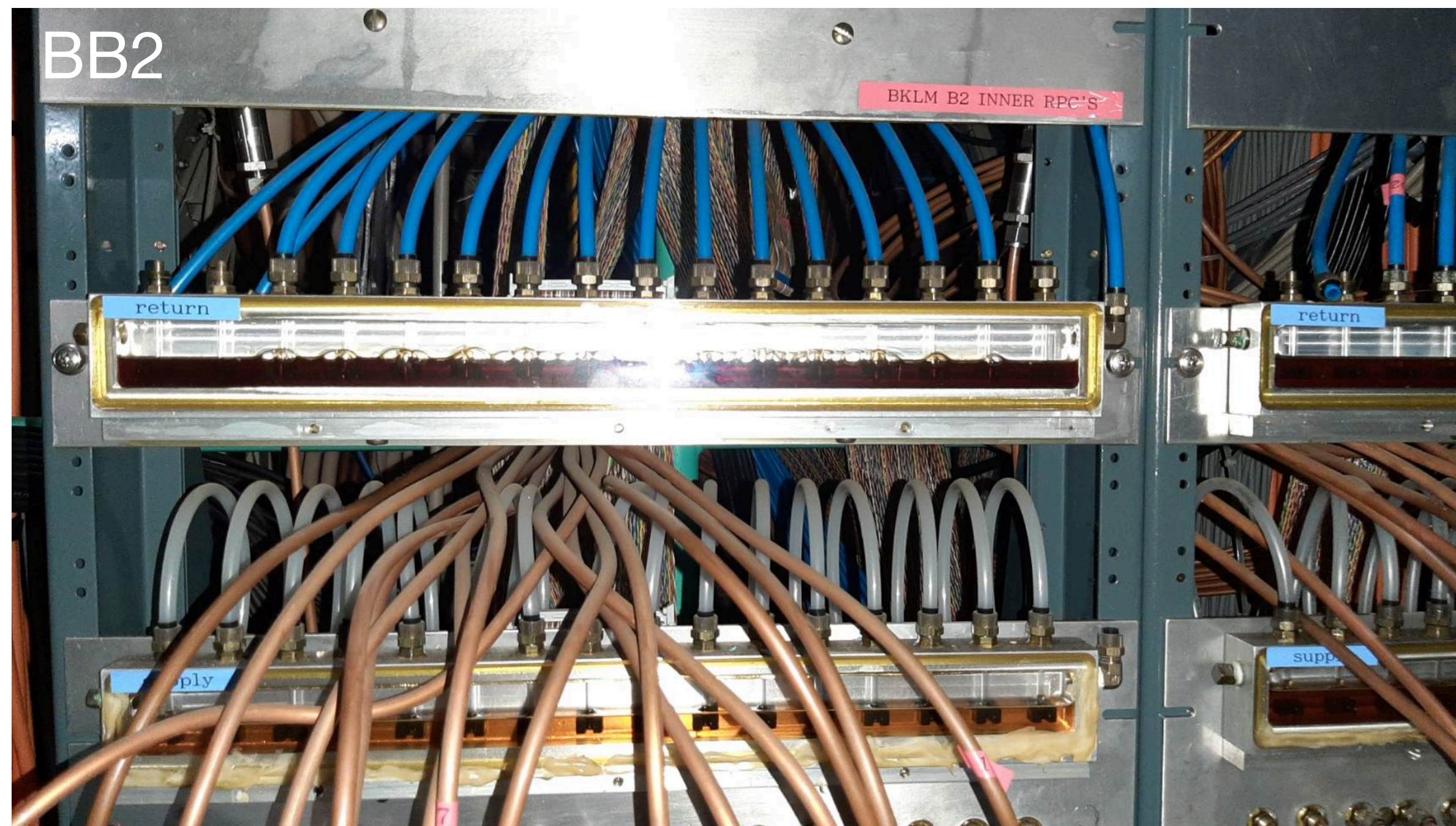
KLM updates from KEK

Michele Veronesi
ISU KLM Meeting
26/08/2022

Outline

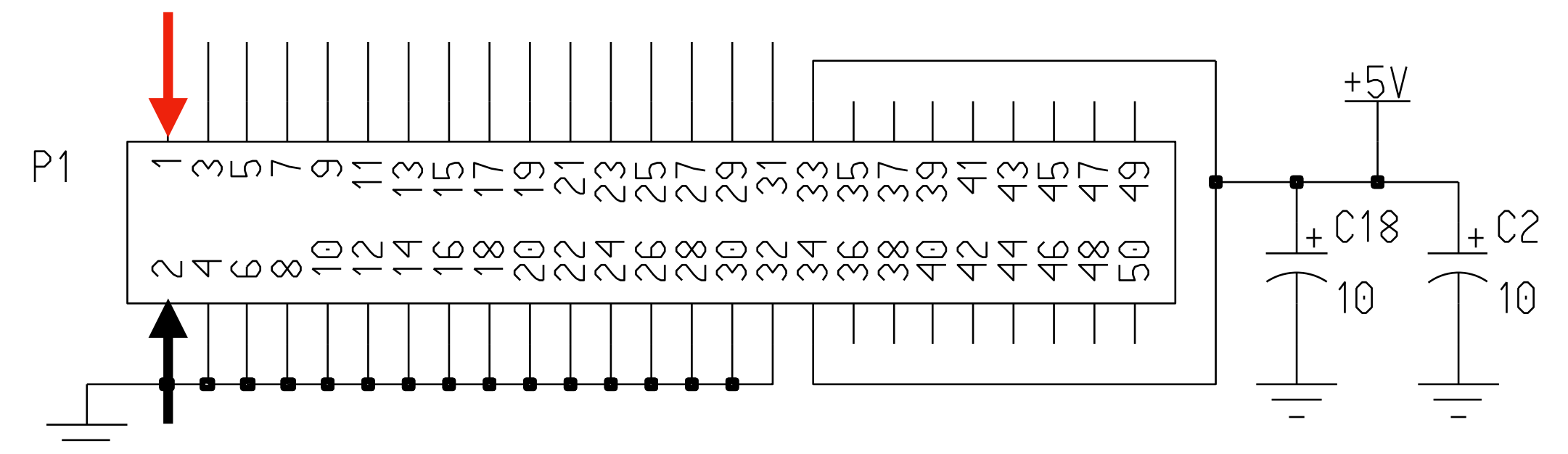
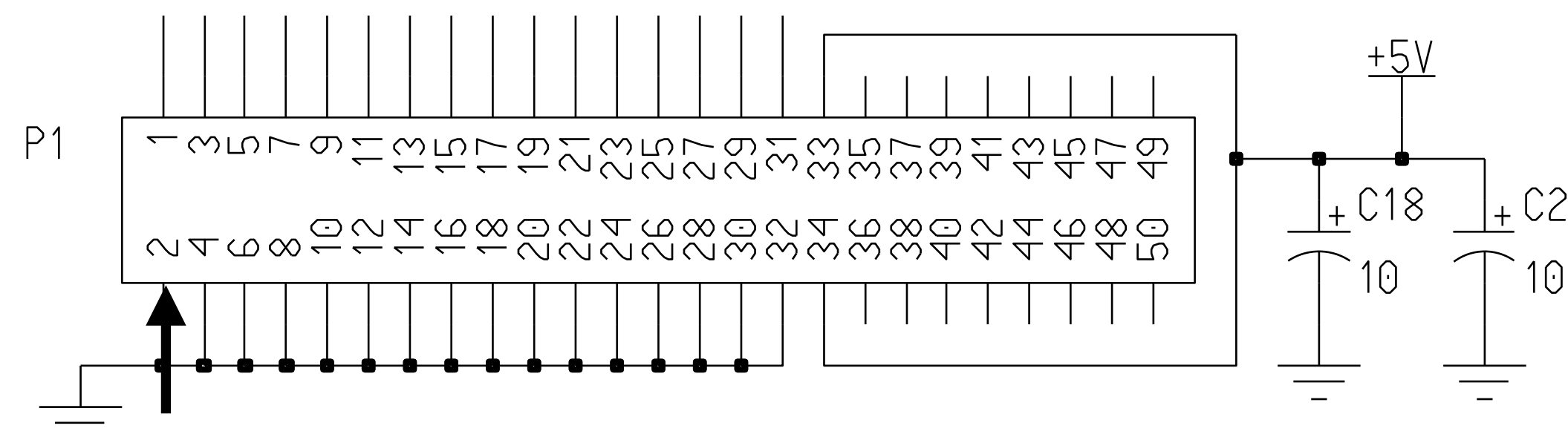
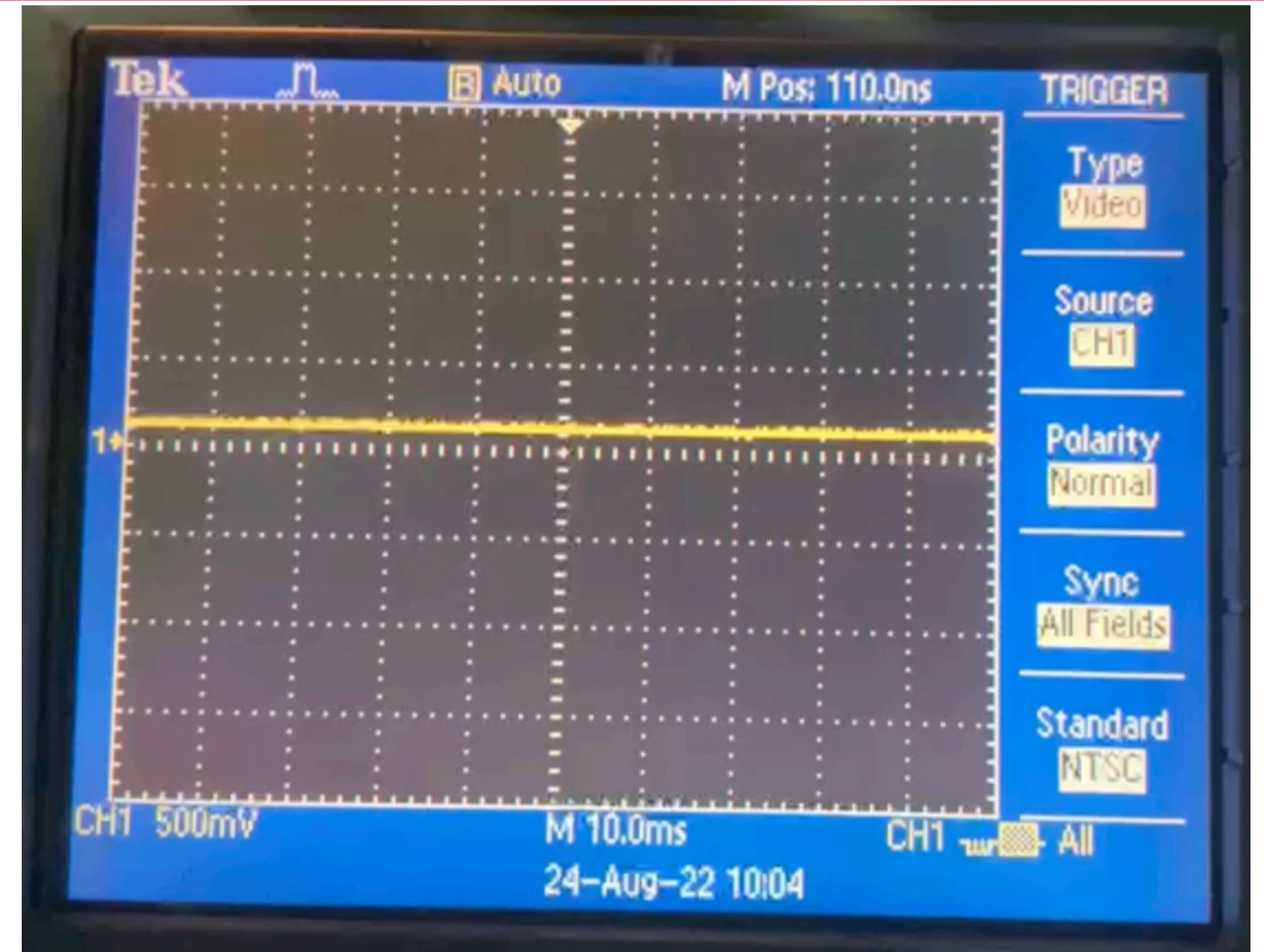
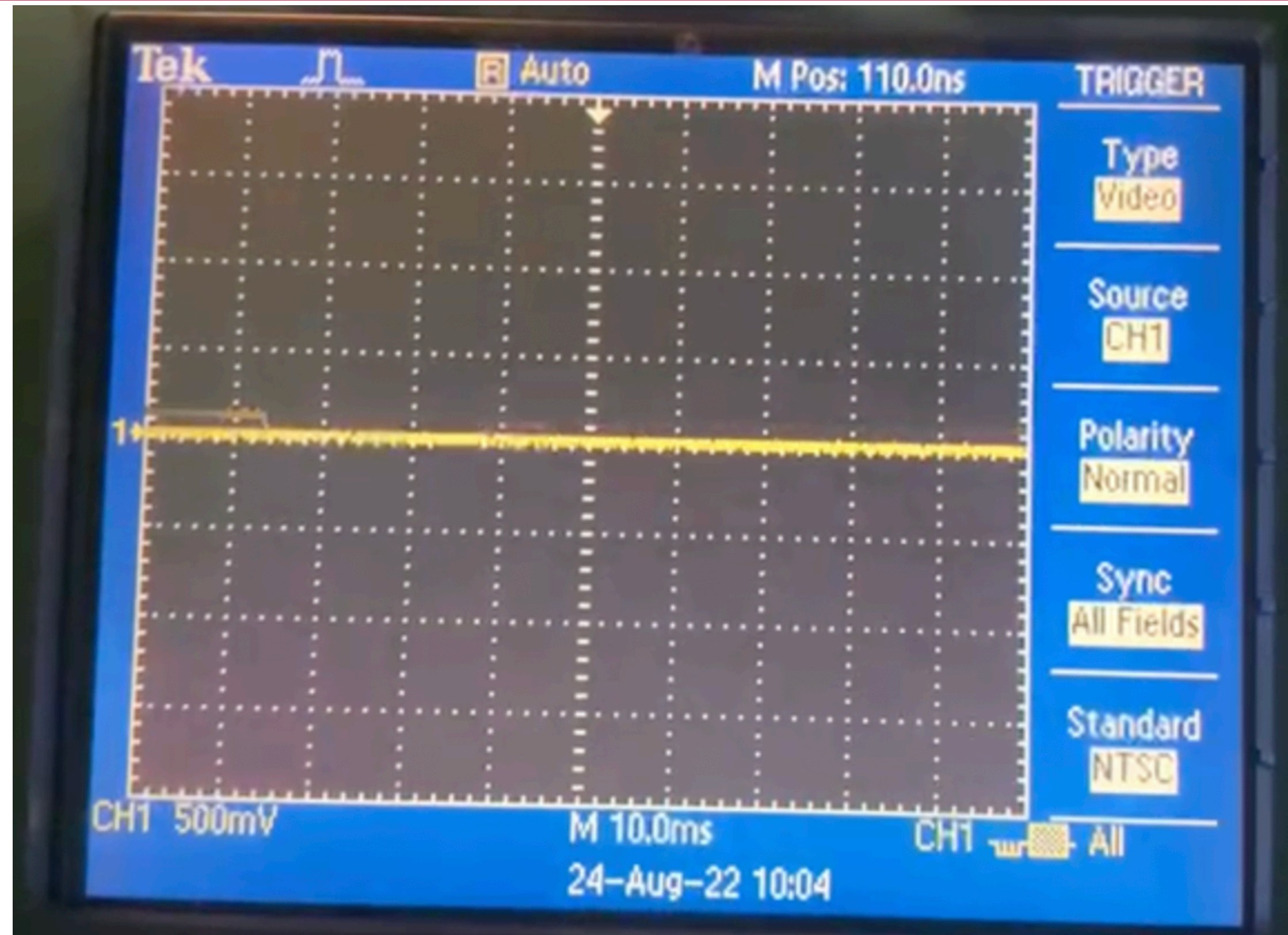
- Measurement of the gas flow from the bubbler panels
- KLM DQM monitoring plots

KLM Bubbler panels

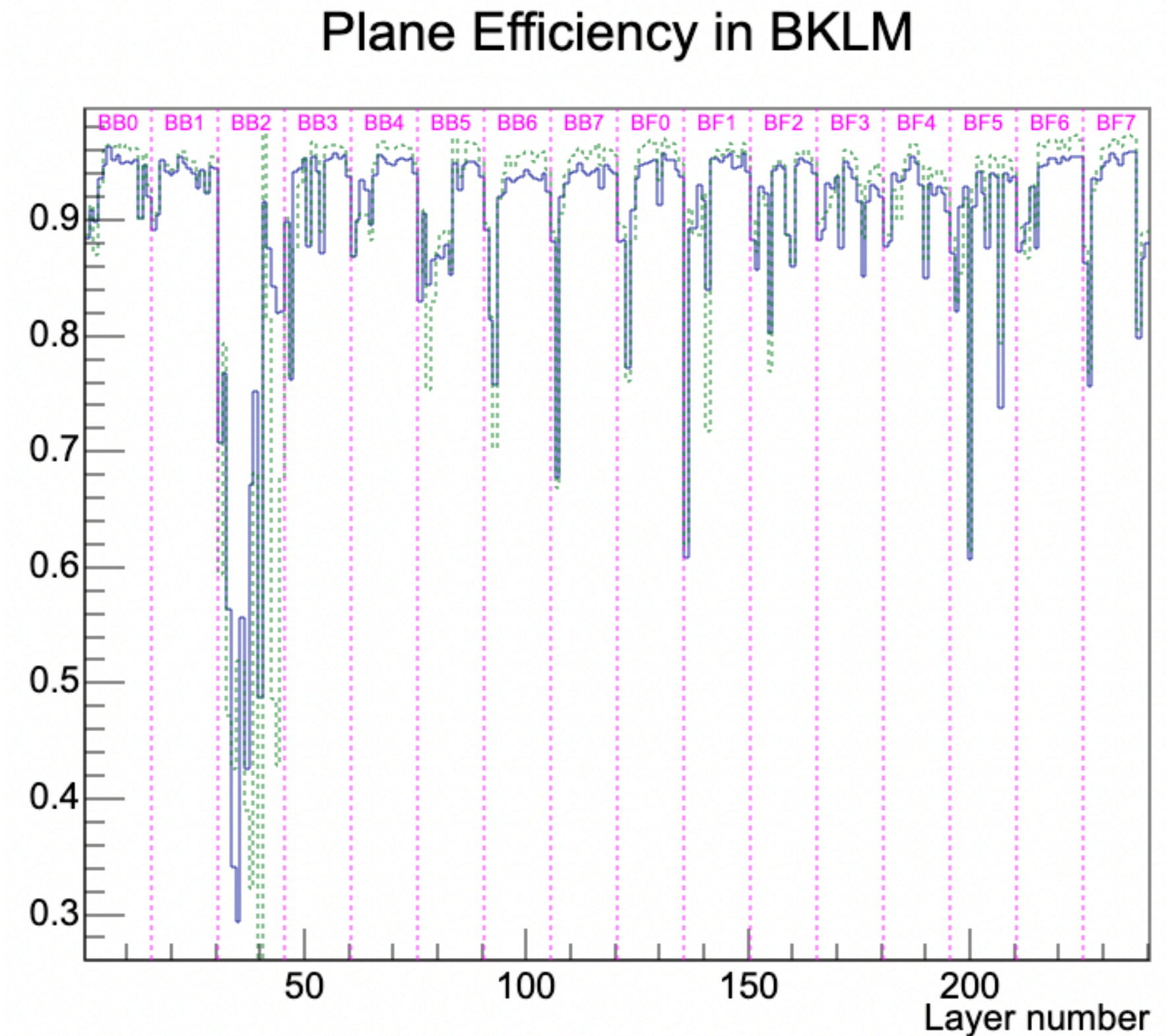
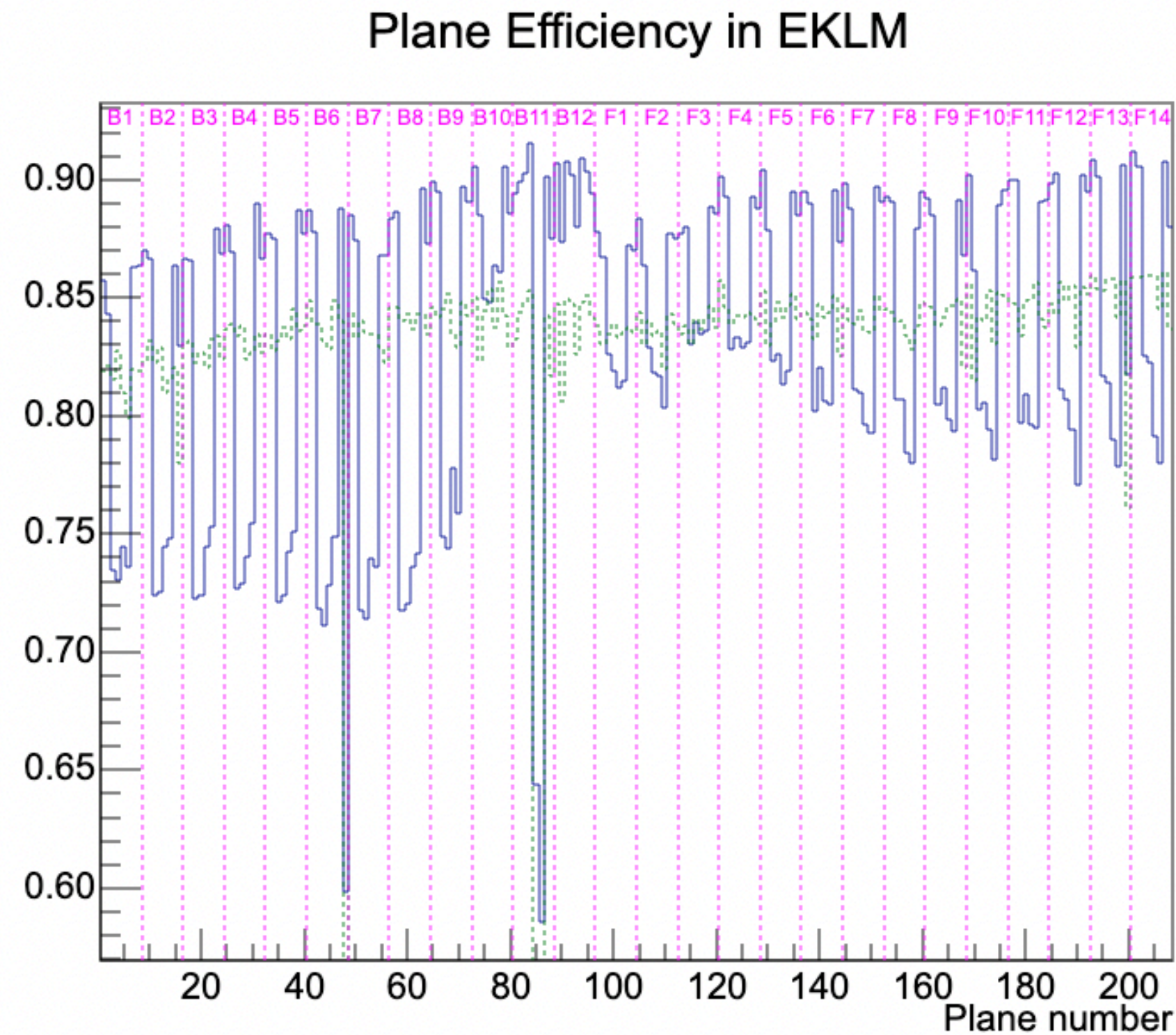


- Asked Sumisawa-san when the gas flow from the RPCs into the bubbler panels will be resumed
- Need a longer ribbon cable for measuring hard to reach panels

KLM Bubblers circuits

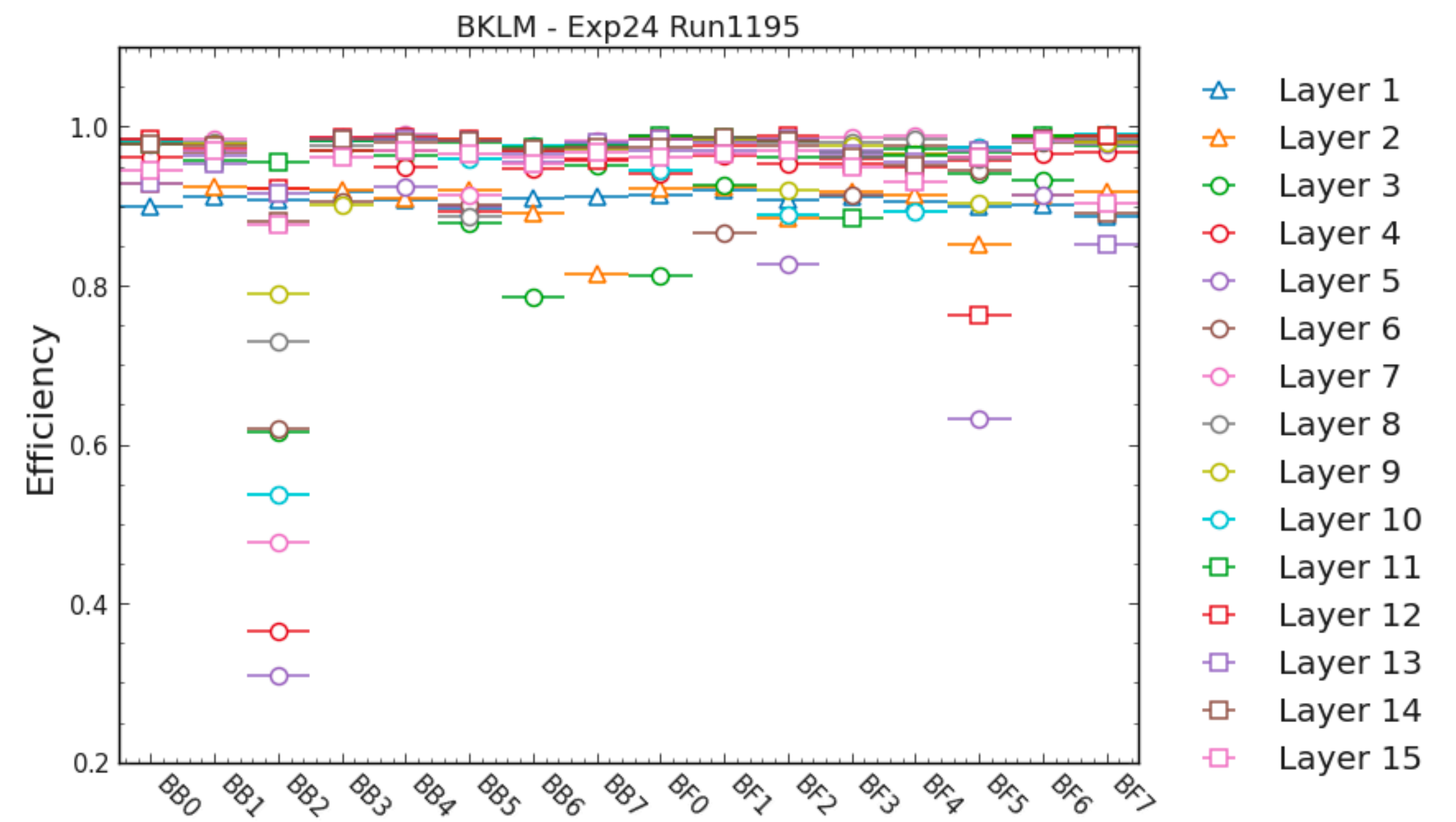
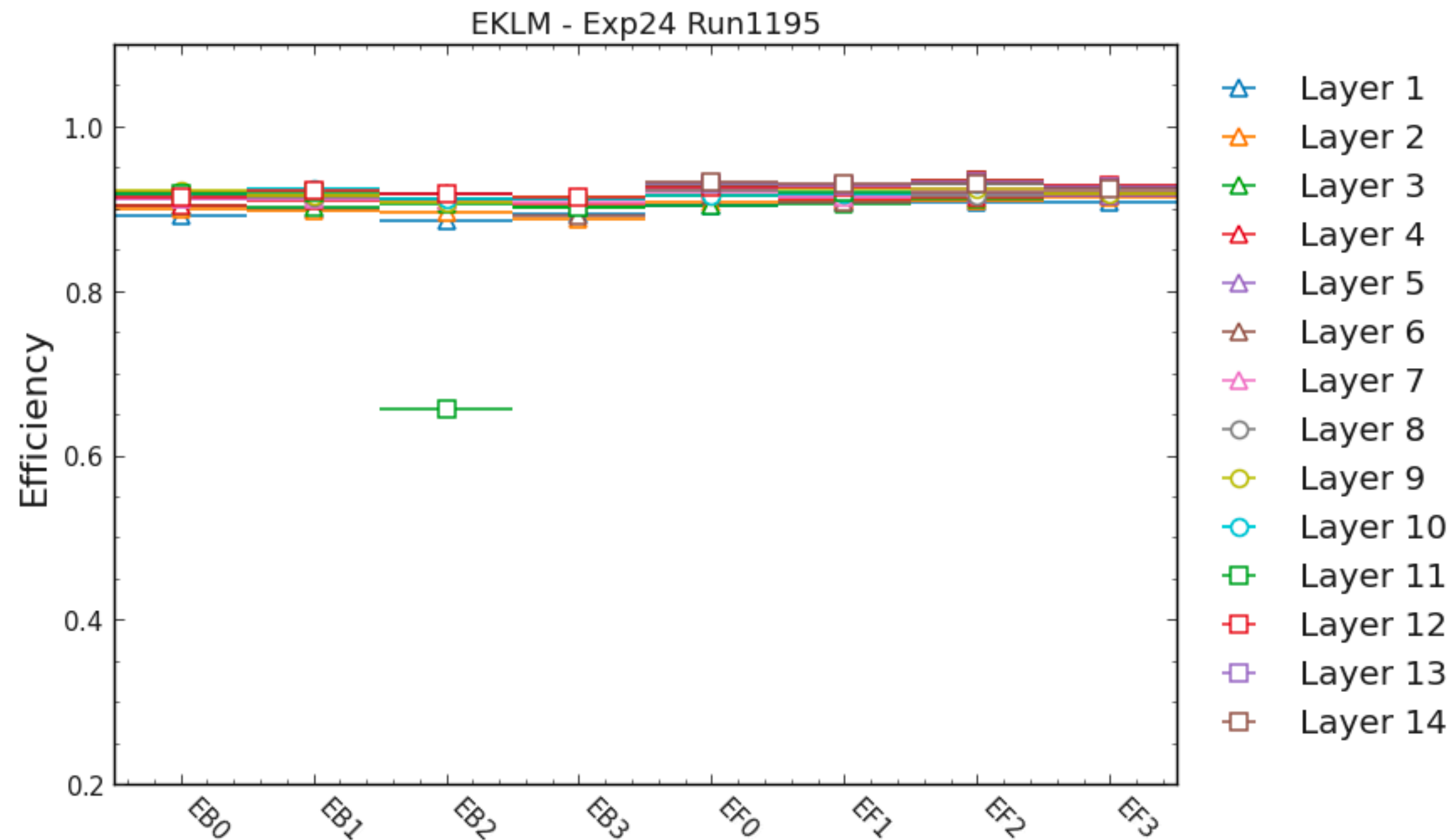


KLM DQM



- Current monitoring plots show KLM efficiency per sector and layers
- JIRA issues: produce efficiency plots with finer granularity (i.e. phi/z planes) [[BII-9406](#)] and comparison (e.g. ratio) of efficiencies with reference [[BII-9325](#)]

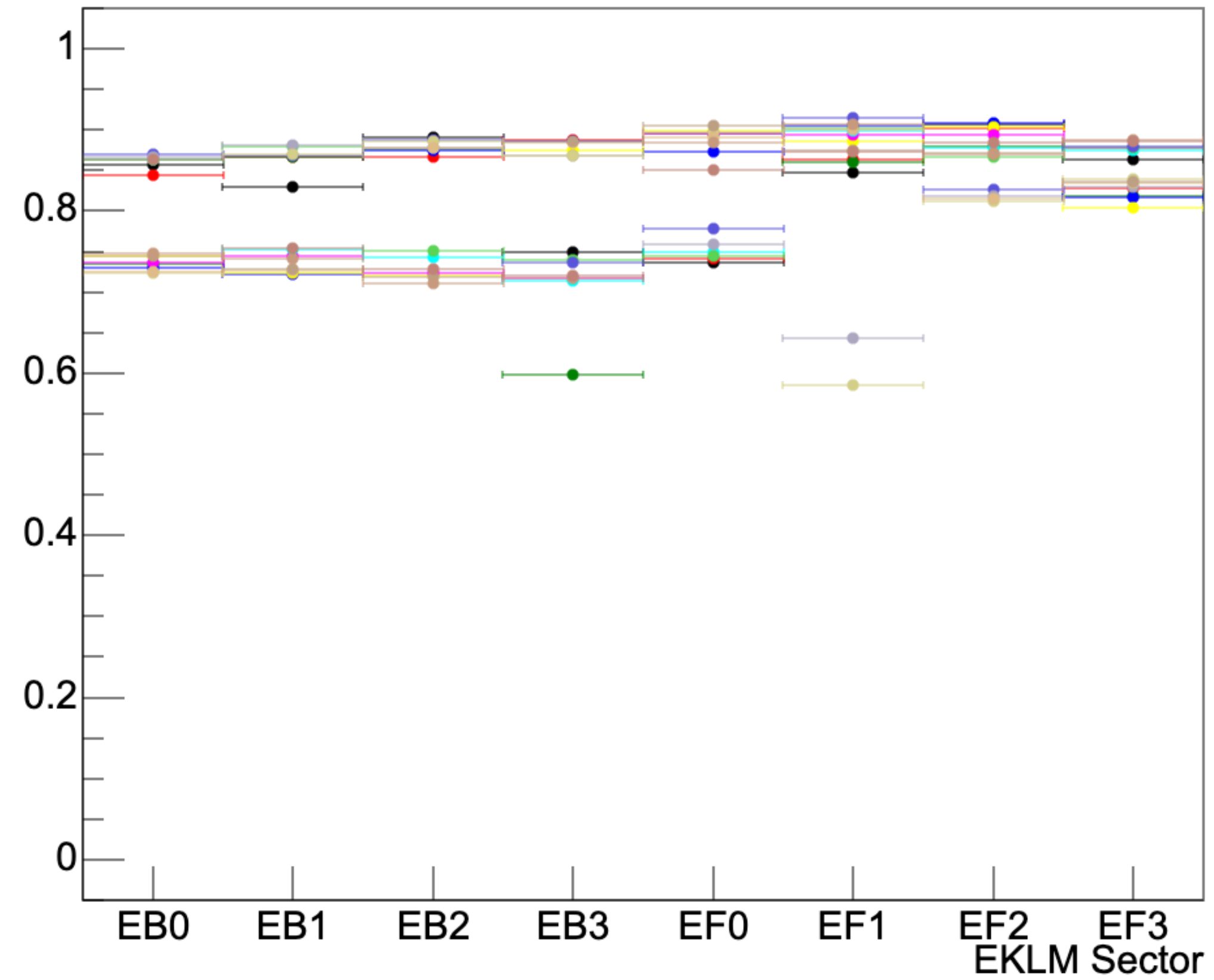
KLM DQM



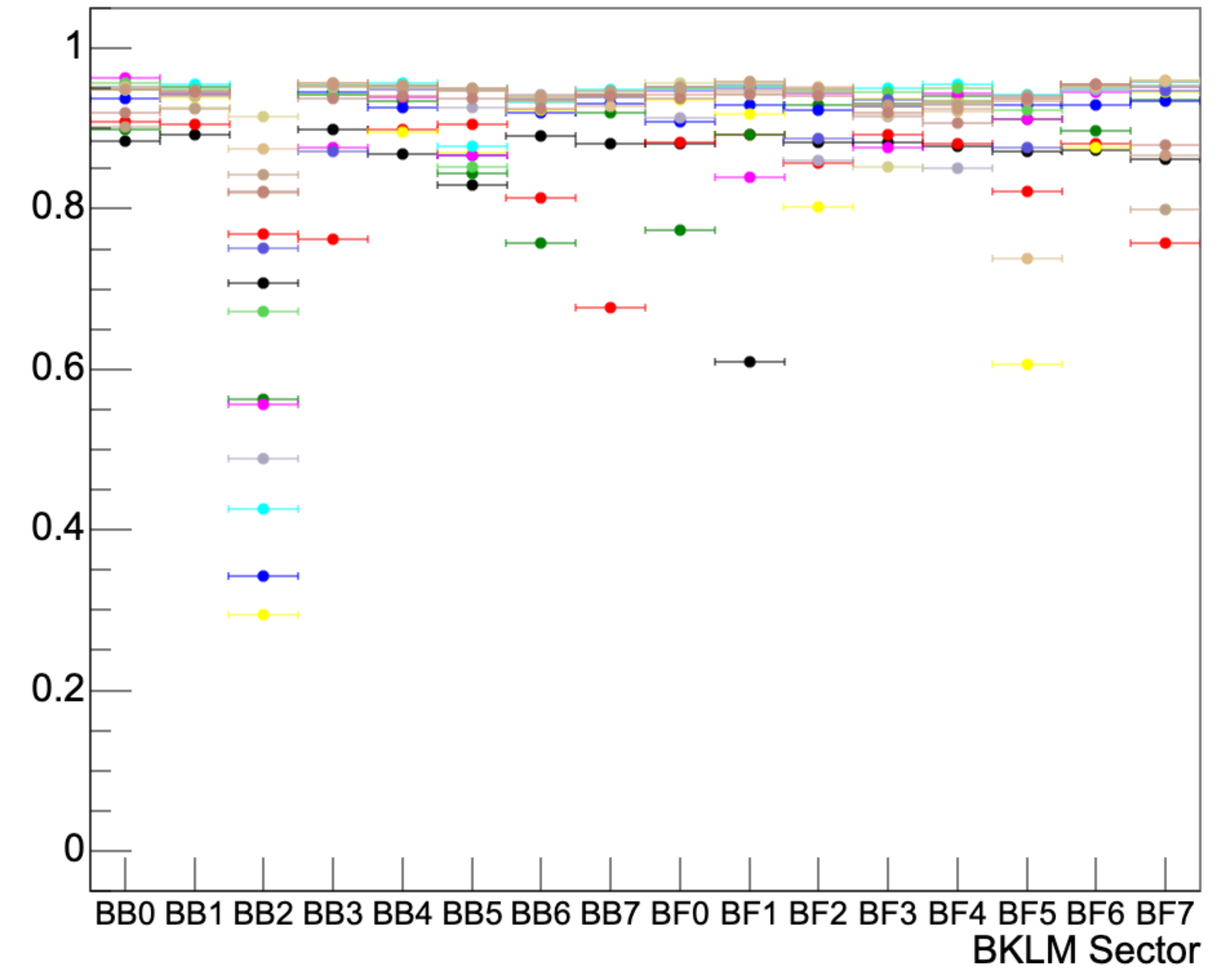
- First exercise: reproduce the above plots (obtained by plotting the calibration ntuples) with the dqm software (`basf2/dqm/analysis/modules/{include,src}/DQMHistAnalysisKLM2.{h,cc}`)
- Bonus: above representation (stacked layers efficiencies vs. KLM sector number) helps spotting outliers without the need for reference histograms

KLM DQM

Layer-by-layer efficiency in EKLM



Layer-by-layer efficiency in BKLM



Backup