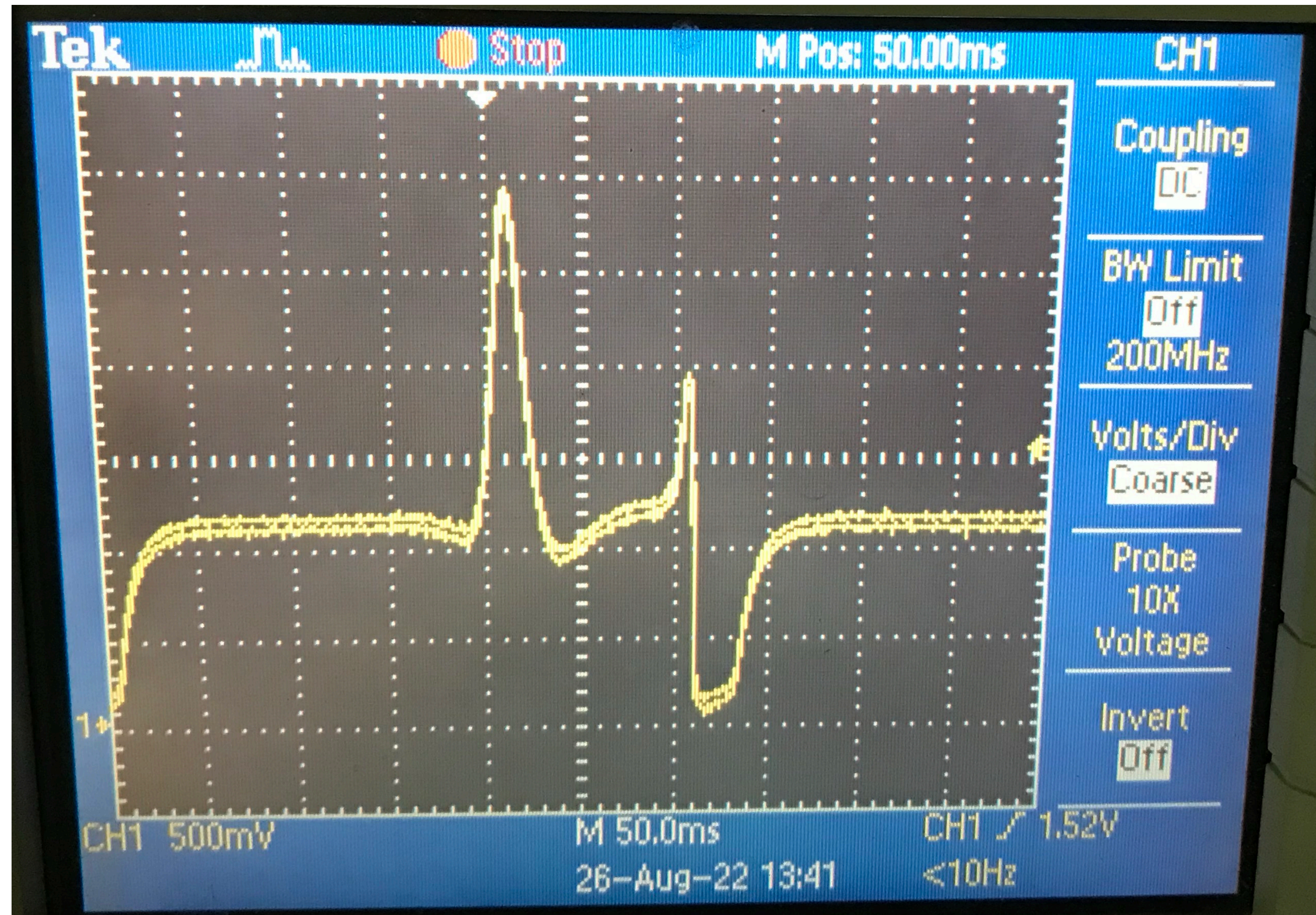
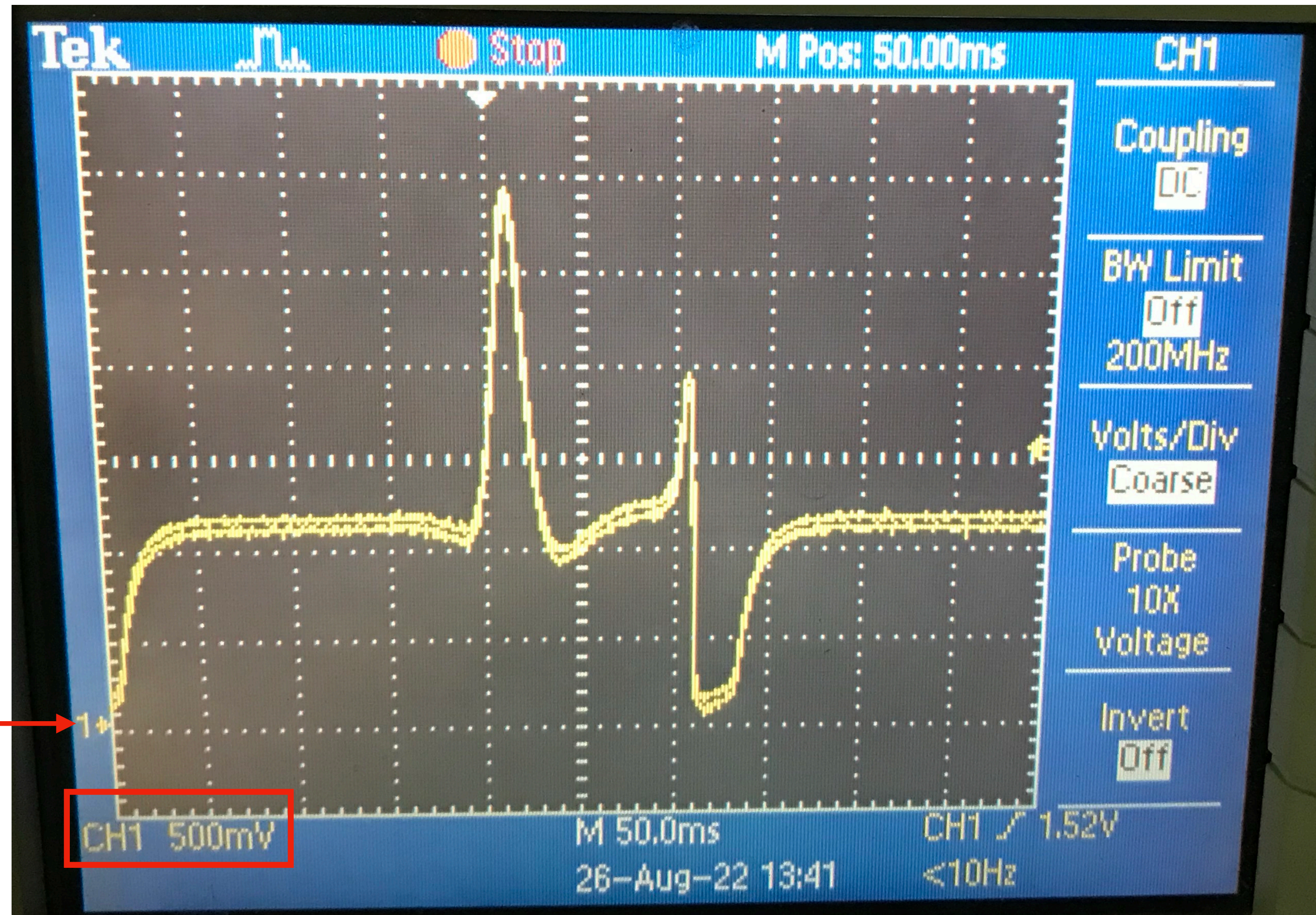


Oscilloscope setup



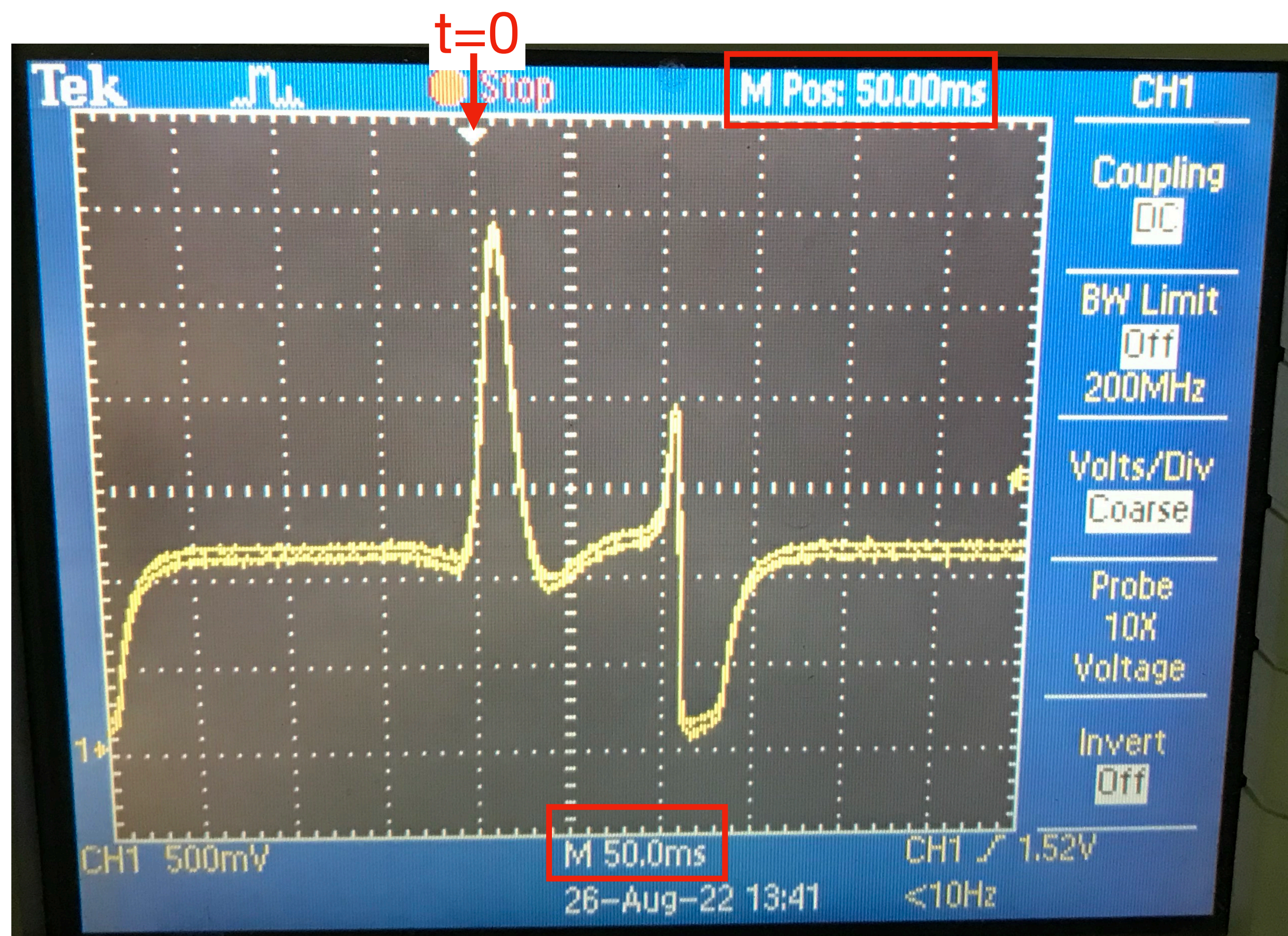
Vertical axis

$\Delta V=0$



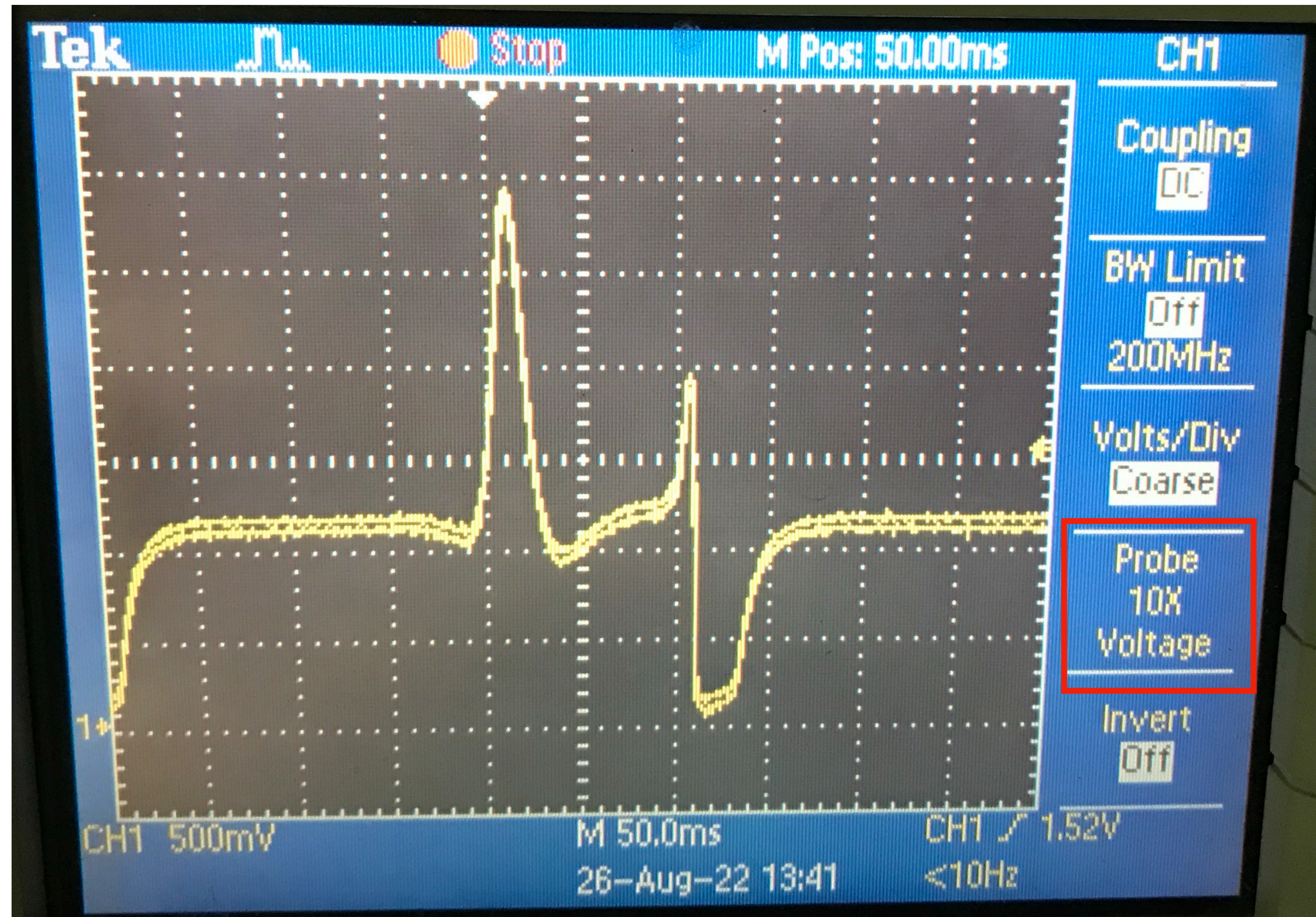
Scale = 500mV
Offset = -1.5V

Horizontal axis



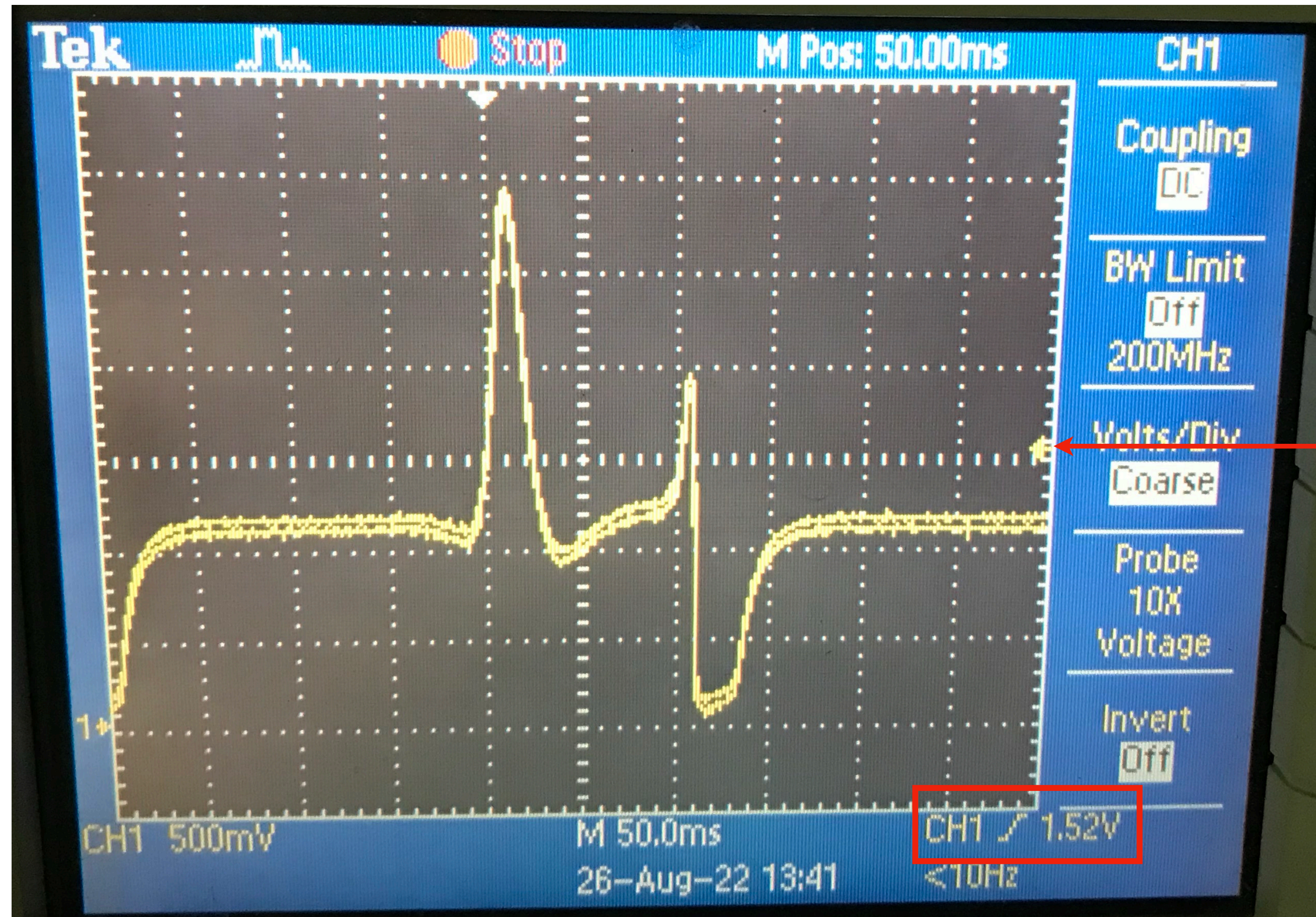
Scale ("M") = 50.0ms
Offset ("M Pos") = -50.00ms

Probe voltage



Verified by
comparing
with DMM

Trigger



Trigger threshold (1.52V) on rising edge