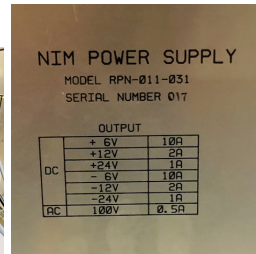
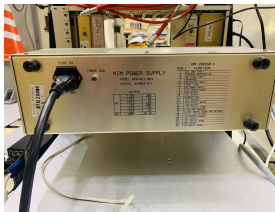
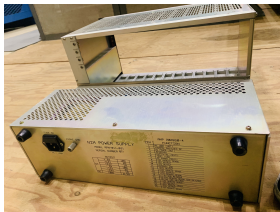


Power supply for NIM crates

- All the NIM crates have ± 6 V, ± 12 , and ± 24 V power supply
- They need to be powered for operation



KLM NIM crates

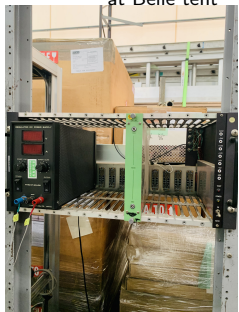
in B4



used in test bench



at Belle tent



at Belle tent



at Belle tent



Efficiency of channels (Inner Return)

green: standard signal shape, red: no signal, orange: low signal,
brown: issue with whole panel, gray: untested channels

Readout	RPC	BF0	BF1	BF2	BF3	BF4	BF5	BF6	BF7
3	15	gray	brown	green	green	green	green	green	gray
5	14			green	green	green	green	green	
7	13			green	green	green	green	green	
9	12			green	green	green	green	green	
11	11			green	green	green	green	green	
13	10			green	green	green	green	green	
15	9			green	green	green	green	green	
17	8			green	green	green	green	green	
19	7			green	green	green	green	green	
21	6			orange	green	green	green	green	
23	5	gray	brown	green	green	green	green	green	gray
25	4			green	green	green	green	green	
27	3			green	green	green	green	green	

Readout	RPC	BB0	BB1	BB2	BB3	BB4	BB5	BB6	BB7
3	15	gray	green	green	green	green	orange	green	green
5	14						orange		orange
7	13						green		green
9	12						orange		green
11	11						orange		green
13	10						green		green
15	9						orange		green
17	8						orange		green
19	7						orange		green
21	6						green		green
23	5	gray	green	green	green	green	orange	green	green
25	4						green		
27	3						green		

Efficiency of channels (Outer Return)

green: standard signal shape, red: no signal, orange: low signal,
brown: issue with whole panel, gray: untested channels

Readout	RPC	BF0	BF1	BF2	BF3	BF4	BF5	BF6	BF7
3	15	gray	green	green	green	green	orange	green	gray
5	14								
7	13								
9	12								
11	11								
13	10								
15	9								
17	8								
19	7								
21	6								
23	5	gray	green	green	green	green	orange	green	gray
25	4								
27	3								

Readout	RPC	BB0	BB1	BB2	BB3	BB4	BB5	BB6	BB7
3	15	gray	green	green	green	green	orange	green	green
5	14								
7	13								
9	12								
11	11								
13	10								
15	9								
17	8								
19	7								
21	6								
23	5	gray	green	green	green	green	orange	green	green
25	4								
27	3								

Summary: Return and Supply

- 55% of the panels have all the channels with standard signal.
- BB5 for inner return and supply, BF4 and BF6 in outer supply, and BB2 in inner supply have low signal for most of the channels

Efficiency of channels (Outer Supply)

green: standard signal shape, red: no signal, orange: low signal,
brown: issue with whole panel, gray: untested channels, cyan: issue with channel

Readout	RPC	BF0	BF1	BF2	BF3	BF4	BF5	BF6	BF7
3	15	gray	brown	green	green	orange	green	green	gray
5	14			orange	green	orange	green	orange	
7	13			green	green	orange	green	orange	
9	12			orange	green	orange	green	orange	
11	11			green	green	orange	green	orange	
13	10			orange	green	orange	green	orange	
15	9			green	green	orange	green	orange	
17	8			orange	green	orange	green	orange	
19	7			green	green	orange	green	orange	
21	6			orange	green	orange	green	orange	
23	5	gray	brown	orange	green	orange	green	orange	gray
25	4			green	green	orange	green	orange	
27	3			orange	green	orange	green	orange	
Readout	RPC	BB0	BB1	BB2	BB3	BB4	BB5	BB6	BB7
3	15	green	green	orange	green	green	green	cyan	green
5	14	green	orange	orange	green	green	green	green	green
7	13	green	green	green	green	green	green	green	green
9	12	green	green	green	green	green	green	green	green
11	11	green	green	green	green	green	green	green	green
13	10	green	green	green	green	green	green	green	green
15	9	green	green	green	green	green	green	green	green
17	8	green	orange	green	green	green	green	green	green
19	7	green	green	green	green	green	green	green	green
21	6	green	green	green	green	green	green	cyan	green
23	5	green	green	green	green	green	green	green	orange
25	4	green	green	green	green	green	green	green	green
27	3	green	green	green	green	green	green	green	green

Efficiency of channels (Inner Supply)

green: standard signal shape, red: no signal, orange: low signal,
brown: issue with whole panel, gray: untested channels cyan: issue with channel

Readout	RPC	BF0	BF1	BF2	BF3	BF4	BF5	BF6	BF7
3	15	gray	brown	green	green	green	brown	green	gray
5	14								
7	13								
9	12								
11	11								
13	10								
15	9								
17	8								
19	7								
21	6								
23	5	gray	brown	green	orange	green	brown	green	gray
25	4								
27	3								
Readout	RPC	BB0	BB1	BB2	BB3	BB4	BB5	BB6	BB7
3	15	green	brown	green	green	green	orange	green	gray
5	14								
7	13								
9	12								
11	11								
13	10								
15	9								
17	8								
19	7								
21	6								
23	5	green	brown	orange	green	green	orange	green	gray
25	4								
27	3								