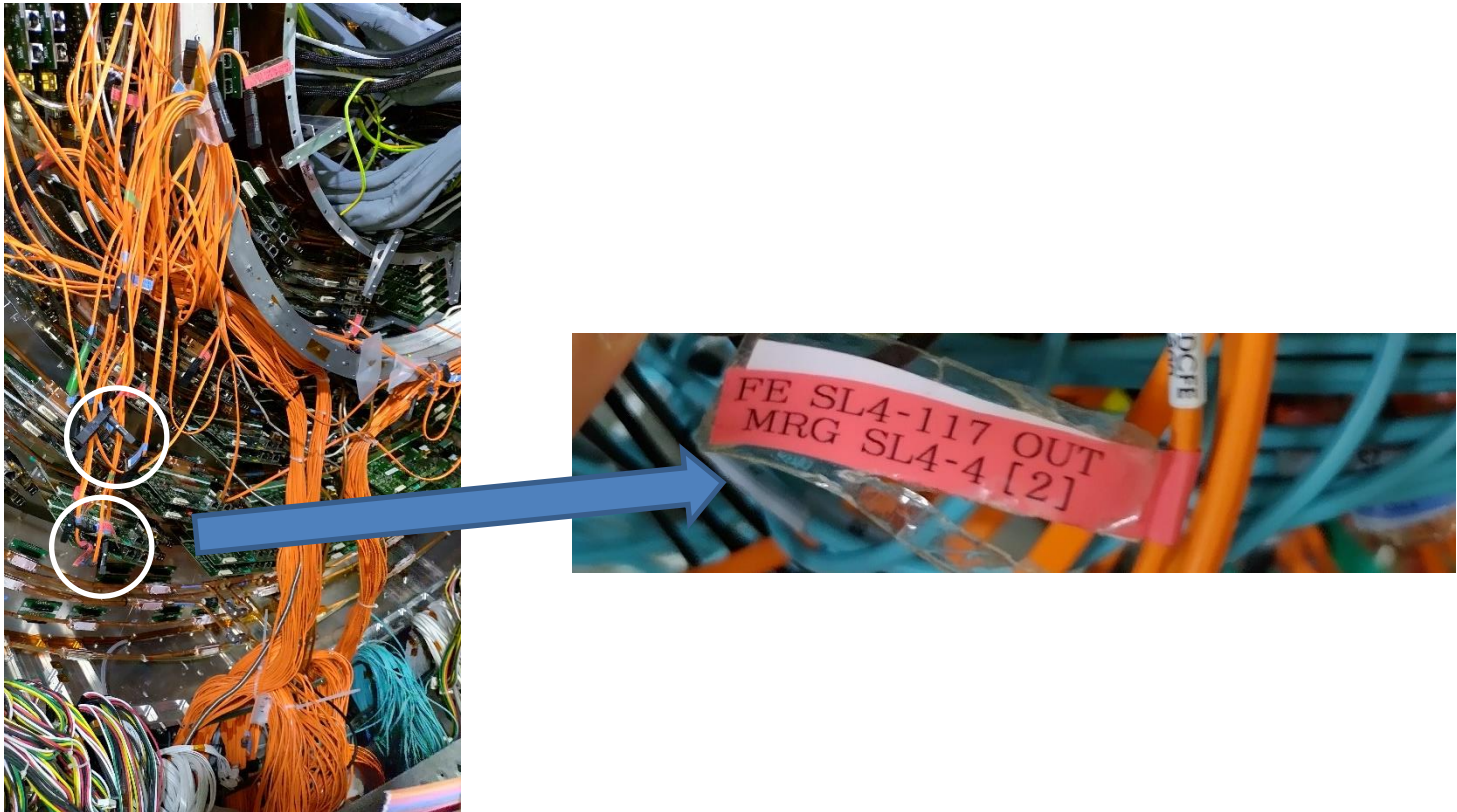


CDCTRG labeling work
2023/3/2
T.Koga

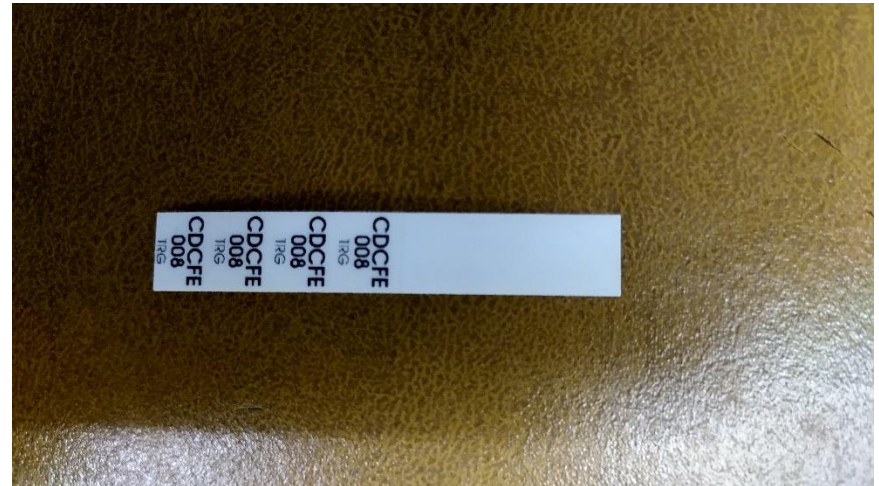
Sellotape label

- Sellotape labels are attached with MPO cable between CDCFE<->MGR
- Sellotape has been damaged by radiation
- >All labels are being replaced



New label

- New labels are made with help of Nakao-san
- the same label used for FTSW<->CDCFE
- Totally $\sim 300(\# \text{CDCFE}) \times 2$ (Ehut and detector side)=**600** labels prepared



Onsite work

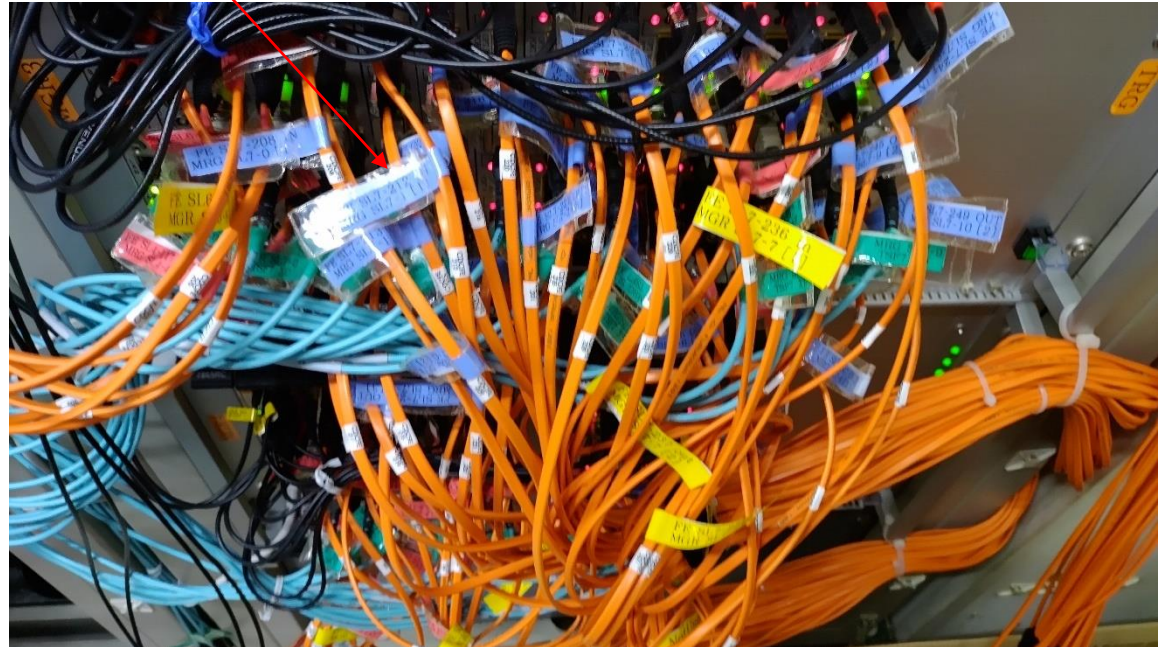
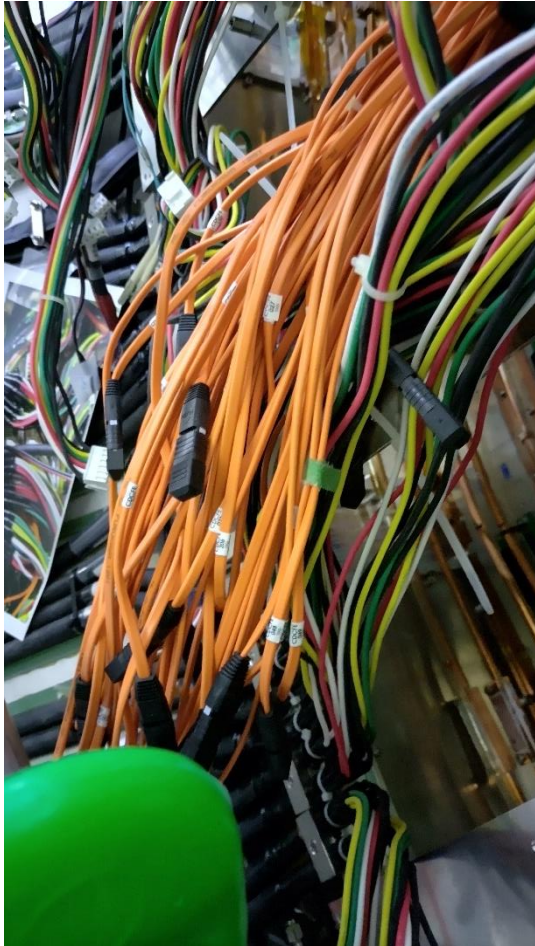
- Now, all cables are removed from CDCFE for TOP PMT work
- Replacement work has been started from this week, with help of Nakazawa-san and Erfei (thank you very much !)
- Procedure
 - 1.check FE number of the cable
 - 2.attach new label
 - 3.remove old label (detector side only)
- Progress
 - detector side: ~50% (lower half of CDC) is done
 - Ehut side: ~40% is done

Onsite work

-Pictures

-detector side: old labels are removed

-ehut side: old labels are kept with the new labels



Channel mapping problem

- A few cables have no label or wrong label
- Sellotape label is broken
- exceptional label is sometimes used at Ehut but not at detector.
not consistent with original label.
- Many spare cables have been used



- Need to be careful for the channel mapping
- >Plan to do one-by-one channel mapping check with MGR.
(reboot MGR and check laser light at detector side)

Summary

- CDC labeling work is on-going

- let's review radiation hardness of material when we installed it to detector
 - maybe I will ask you to join on-site work..

- Need to be careful for the channel mapping

- >Plan to do one-by-one channel mapping check with MGR.
(reboot MGR and check laser light at detector side)